

Air Filters, Pollution, and Student Achievement*

Michael Gilraine
Department of Economics
New York University

March 17, 2020

ABSTRACT

This paper identifies the achievement impact of installing air filters in classrooms for the first time. I leverage a unique setting arising from the largest gas leak in U.S. history, whereby the offending gas company installed air filters in every classroom within five miles of the leak (but not beyond). Using a spatial regression discontinuity design, I find substantial improvements in student performance: air filters raised mathematics and English scores by 0.20σ . Natural gas was not detected inside schools, indicating that the filters improved air quality by removing common pollutants. On that basis, these results should apply more widely.

Keywords: Air Pollution; Human Capital; Air Filters; Spatial Regression Discontinuity; Cost Effectiveness.

JEL codes: I10, I21, I24, I28.

*Thanks to Robert McMillan, Sefi Roth, Douglas Miller, and Andrew Hill for helpful discussions about this topic and to seminar participants at the NBER Children's Meeting and the Canadian Economics Association for additional comments. Thanks also to the Los Angeles Unified School District for access to the data and for their support of this research project. All remaining errors are my own. Contact: Department of Economics, New York University, 19 West 4th Street, New York, NY 10012. Email: mike.gilraine@nyu.edu.

1 Introduction

A sizeable literature has shown that air pollution negatively affects health and cognition, with convincing recent studies demonstrating that increased levels of air pollution reduce student achievement (Ebenstein, Lavy, and Roth, 2016; Heissel, Persico, and Simon, forthcoming; Persico and Venator, 2019).¹ This evidence, in turn, has prompted calls to reduce children’s exposure to airborne pollutants. Large-scale pollution reduction has proved difficult, however, as the required policies are often costly and politically unpopular. In their absence, focused policies that mitigate the negative impacts of polluted air have the potential to improve student achievement *and* be cost-effective.

A natural location to reduce children’s pollution exposure is at their school given that they spend one-half of their waking time there on weekdays. While officials would ideally locate schools in low-pollution areas, such policies are often infeasible due to the high levels of pollution throughout many cities.² A more feasible policy would be to lower air pollution *inside* the school.³ Given that high-performance air filters can decrease indoor particulate matter by ninety percent (Polidori, Fine, White, and Kwon, 2013), installing air filters in classrooms offers a candidate means to substantially decrease students’ air pollution exposure at relatively low cost.

To assess the merits of such a policy in practice, my analysis uses a natural experiment arising from the Aliso Canyon gas leak, the largest in US history,⁴ to investigate the impact of air filters on student achievement. The gas leak occurred in a wealthy Los Angeles neighborhood and lasted from October 23, 2015 to February 18, 2016. To estimate the effect of air filters, I take advantage of the fact that the Los Angeles Unified School District (LAUSD) and the owner of the gas well, the Southern California Gas Company, placed air filters in every classroom, office, and common area in all schools within five miles of the gas leak at the end of January 2016. The number of air filters installed was substantial: a total of 1,756 plug-in air filters were delivered to just eighteen schools.⁵ This variation lends

¹See Graff Zivin and Neidell (2013) and Almond, Currie, and Duque (2018) for in-depth reviews of the literature.

²Although every city requires schools, policymakers can try to somewhat mitigate the effect of air pollution by avoiding the most polluted areas within a city: California, for instance, enacted a state law in 2003 that prohibits building schools within 500 feet of a freeway.

³In a similar spirit, one could also reduce children’s exposure to pollutants in school buses, although students only spend a small fraction of their day in buses. Even so, Austin, Heutel, and Kreisman (2019) and Beatty and Shimshack (2011) find that retrofitting school bus engines increases test scores and improves respiratory health, respectively.

⁴To place the gas leak into perspective, Conley et al. (2016) find that the Aliso Canyon gas leak created greenhouse gas emissions equivalent to the annual emissions of 572,000 passenger cars.

⁵Active carbon filters for all heating and air conditioning units were also installed in these schools upon request.

itself naturally to a spatial regression discontinuity design, whereby I compare outcomes for students attending schools just within the five-mile boundary to those just outside.

Using detailed administrative data from the LAUSD, I document significant test score increases in schools receiving air filters. Specifically, I find that air filters raised mathematics scores by 0.20σ , with this increase being statistically significant at the five percent level. Similarly, I find that English scores increase by 0.19σ , although this increase is generally not statistically significant. Results are robust to choice of bandwidth, functional form of the geographic location control, outliers, and the inclusion of detailed student demographics, including residential ZIP Code fixed effects that help control for a student’s exposure to pollution at home. I also find that these test score improvements persist into the following year.

To place the effect size into context, *outdoor* fine particulate concentrations measured by $PM_{2.5}$ – the focus of much of the literature – averaged $7.33\mu\text{g}/\text{m}^3$ during the January-June 2016 period of interest (recorded by a nearby EPA air monitor). Engineering studies indicate air filters reduce *indoor* particulate matter by ninety percent. Assuming outdoor and indoor air pollution are identical suggests a test score increase of approximately 0.03σ ($= 0.2/(7.33 * 0.9)$) for each $\mu\text{g}/\text{m}^3$ of fine particulate reduction. In terms of comparison, Ebenstein et al. (2016) find that decreasing *outdoor* $PM_{2.5}$ by one $\mu\text{g}/\text{m}^3$ on the test day *only* raises test scores by 0.006σ ,⁶ suggesting the effect identified in this paper is five times the *one day* effect noted in Ebenstein et al. (2016). Indoor particulate levels, however, often exceed outdoor levels (Mumovic et al., 2018). Given this, a more direct comparison is Roth (2019) who uses day-to-day variation in *indoor* particulate matter at a public research university within the Greater London Urban Area to calculate the causal effect of *indoor* air quality on test day on student performance. According to his estimates, installing air filters on *only* the day of the test would raise test scores by 0.09σ .⁷ Since air filters in my context reduce pollutant exposure for students and teachers for about four months (including the day of the test), it is unsurprising that the estimated effects are two to five times the one (test) day effects previously noted in the literature.

Next, I demonstrate that these test score gains are unlikely to be context-specific. To do so, I use detailed air testing data gathered in schools within the five-mile boundary to show that these schools did not have abnormally high levels of airborne pollutants associated with

⁶Ebenstein et al. (2016, pg. 50) report “that a test score in an exam on a day with average pollution (AQI = 59.74) will be lowered relative to an exam taken on a day with the minimum pollution level (AQI = 10.1) by 0.083 standard deviations.” Converting AQI into $\mu\text{g}/\text{m}^3$ units yields the numbers cited.

⁷Roth (2019) calculates a test score increase of approximately 0.003σ for each $\mu\text{g}/\text{m}^3$ of fine particulate reduction (measured by PM_{10}). Given the average *indoor* particulate concentration in his sample is $33\mu\text{g}/\text{m}^3$, air filters should decrease particulate matter by $30\mu\text{g}/\text{m}^3$ ($= 33 * 0.9$) and should thus raise test scores by 0.09σ ($= 0.003 * 30$).

natural gas. This is also consistent with results from a high-precision natural gas analyzer that looked for traces of natural gas on roads around the gas leak and found that the quantity of airborne natural gas dissipated outside two miles of the leak (Phillips, Ackley, and Jackson, 2016).⁸ Given these facts, it is likely that the beneficial effect of the air filters comes from eliminating common airborne pollutants. While Los Angeles faces high levels of air pollution, particulate matter levels (measure by $PM_{2.5}$) in many cities (including New York, Chicago, and Houston) exceed those reported by the EPA air monitor closest to the gas leak. Together, these facts suggest that installing air filters in schools throughout many areas of the United States should generate similar test score gains.

The per-year cost to install and maintain air filters throughout a school is around \$1,000 per class.⁹ Given the large test score increases they generate, installing air filters substantially outperforms other education reforms such as class size reduction on a cost-benefit basis. Indeed, the cost-to-benefit ratio indicates air filter installation is one of the most cost-efficient (in terms of dollar per test score) educational interventions available to policymakers, outperforming the cost-effectiveness of notable interventions such as high dosage tutoring (Cook et al., 2015), Perry Preschool (Schweinhart et al., 2005), cash transfers from the EITC (Dahl and Lochner, 2012), and Head Start (Ludwig and Phillips, 2007). Air filters thus have the potential to mitigate the negative impact of poor air quality significantly, increasing student performance and – given underprivileged students often reside in high pollution areas (Clark et al., 2014, 2017; Voorheis, 2017; Currie et al., 2020) – helping to reduce the pervasive test score gaps that plague public education.

The rest of the paper is organized as follows: The next section describes the literature along with the Aliso Canyon gas leak and subsequent policy response. This provides the basis for my empirical strategy, which is set out in Section 3, along with the data used. The estimates are presented in Section 4 and are placed in context in Section 5. Section 6 concludes.

2 Background

This section starts by describing the related literature linking air pollution to health and cognition. The setting of this study – the Aliso Canyon gas leak – is then introduced.

⁸In addition, the primary component of natural gas, methane, is lighter than air and so should generally rise, although in practice the turbulent mixing of gases is an important factor in determining the diffusion of pollutants into the environment.

⁹The air filter itself costs about \$700 per unit, although electricity and filter replacement costs add another \$540 in costs per year. Assuming a five-year life span for the unit and the need to install 1.5 units for each class to cover common areas leads to the approximate \$1,000 per class-year cost.

Particular attention is paid to describing the key policy variation used in this paper whereby air purifiers were installed in every classroom, office, and common area for schools within five miles of the leak.

2.1 Related Literature

Much of the literature on air pollution has focused on particulate matter (PM), which is a mixture of organic and inorganic particles suspended in the air, such as dust, pollen, soot, smoke, and liquid droplets. Particulate pollutants are classified into three categories based on their diameter in micrometers (μm): coarse particles with a diameter between 2.5 and $10\mu\text{m}$ (PM_{10}), fine particles with a diameter of $2.5\mu\text{m}$ or less ($\text{PM}_{2.5}$), and ultrafine particles which are on the nanoscopic scale (i.e., diameter less than $0.1\mu\text{m}$).¹⁰ For comparison, human hair has a diameter of approximately $50\text{-}70\mu\text{m}$. Epidemiological research has highlighted these particles as being of particular concern. On that basis, much of the literature defines air quality using one of these particulate matter definitions. It is difficult, however, to attribute the deleterious effects of poor air quality to one specific pollutant since the various measures of particulate matter are highly correlated with each other and the presence of other pollutants such as carbon monoxide, nitrogen oxides, sulfur dioxide, and mercury.

Outdoors, particulate matter is created by a variety of natural and man-made sources such as: fires, construction, power plants, factories, farm activities, and automobiles. Indoors, the concentration of particulate matter is a result of complex interactions between local meteorology, surrounding structures, and building characteristics (e.g., building ventilation, location of air intakes, etc.). Given this, indoor air pollution is highly spatially and temporally variable (Madureira et al., 2012; Mumovic et al., 2018). In addition, a significant source of indoor particulates is human activities that cause the resuspension of settled dust. For instance, Polidori et al. (2013) investigate three Los Angeles area schools and note that indoor particulates in classrooms are highest during the time of day when humans enter or exit classes (e.g., recess). The resuspension of dust by human activities is likely why indoor concentrations of coarse particles in classrooms tend to surpass outdoor levels during the daytime (Mumovic et al., 2018).

An extensive literature has linked outdoor air quality to mortality and health conditions such as bronchitis and asthma. Much of this literature has used short-term (often day-to-day or *in utero*) variation in air quality to document the negative effects of air pollution.

¹⁰The division of particulate matter into these three categories is based on their ability to penetrate into the lung: coarse particulate matter can permeate the trachea and bronchi, fine particulate can penetrate deeper into the gas exchange regions of the lung (i.e., alveoli), and ultrafine particles are small enough to pass through the lung tissue into the blood stream and affect other organs.

Short-term variation in air quality has come from numerous sources, such as air traffic (Schlenker and Walker, 2015), local weather conditions (Heft-Neal et al., 2019; Deryugina et al., 2019), environmental regulation (Sanders and Stoecker, 2015), road traffic (Currie and Walker, 2011; Knittel et al., 2016; Simeonova et al., forthcoming), within-family (Currie et al., 2009b), and within ZIP code-month-year cells (Neidell, 2004; Currie and Neidell, 2005). An influential literature has also provided convincing estimates of the long-term effects of air pollution by leveraging long-term changes to pollution exposure coming from the Clean Air Act (Chay et al., 2003; Isen et al., 2017), recessions (Chay and Greenstone, 2003), wind patterns (Anderson, forthcoming), industrial plant closings (Currie et al., 2015), and compulsory relocations (Lleras-Muney, 2010).

Likewise, a growing literature has documented the negative effects of outdoor air pollution on human capital formation.¹¹ Sanders (2012) uses county-level variation in the timing and severity of the early-1980s industrial recession and finds that a standard deviation increase in prenatal particulate exposure is associated with a 0.02-0.06 standard deviation decrease in high school test scores. In a similar spirit, Bharadwaj et al. (2017) use within-family comparisons and document a one standard deviation increase in carbon monoxide exposure *in utero* decreases fourth grade test scores by 0.03-0.05 standard deviations. Marcotte (2017) finds that a $25\mu\text{g}/\text{m}^3$ increase in particulate matter (measured by $\text{PM}_{2.5}$) on the day of the test reduces student performance by about two percent. Similarly, Ebenstein et al. (2016) use variation in test day particulate pollution in Israel and find that every ten $\mu\text{g}/\text{m}^3$ increase in particulate matter (measured by $\text{PM}_{2.5}$) reduces test scores by 0.06 standard deviations.

Some papers have also suggested possible mechanisms underlying these effects. Currie et al. (2009a) use pollution variation in school-year-attendance period cells and estimate that an additional day with carbon monoxide levels above EPA standards increases student absenteeism by 9 percentage points. Persico and Venator (2019) leverage the closing of large industrial facilities and compare students attending schools nearby to those further away and find the drop in industrial pollution raised test scores by 0.024 of a standard deviation *as well as* reducing the likelihood of absences and school suspensions. Similarly, Heissel et al. (forthcoming) compare students attending schools downwind relative to upwind of highways and determine that increased air pollution from being downwind lowered test scores by 0.04 of a standard deviation along with raising behavioral incidents and absences by 4.1 and 0.5 percentage points, respectively.

Recently, several papers have been able to link *indoor* air quality to reduced cognitive performance. Künn, Palacios, and Pestel (2019) use detailed indoor air quality information

¹¹A related literature has shown air pollution reduces worker productivity on farms (Graff Zivin and Neidell, 2012), in pear-packing plants (Chang et al., 2016), and at call centers (Chang et al., 2019).

from chess tournaments held in Germany to show that a ten $\mu\text{g}/\text{m}^3$ increase in fine particulate matter (measured by $\text{PM}_{2.5}$) raises a player’s probability of making an erroneous chess move (as determined by a chess engine) by 26.3 percent. Focusing on test scores, Roth (2019) likewise uses day-to-day variation in *indoor* particulate matter at a public research university within the Greater London Urban Area and finds a test score increase of approximately 0.003σ for each $\mu\text{g}/\text{m}^3$ of fine particulate reduction (measured by PM_{10}).

The research also links to the school construction and renovation literature. For instance, Stafford (2015) uses the timing of school renovations throughout a district and finds that mold and ventilation remediation projects increase test scores by 0.07-0.15 of a standard deviation. While beneficial, the costs of these projects are substantial: the average mold remediation and ventilation improvement project cost \$500,000 and \$300,000, respectively. Similar effects have also been found using new school construction (Neilson and Zimmerman, 2014; Hashim et al., 2018; Lafortune and Schönholzer, 2019) which entail even larger costs. The research here suggests a possible reason for the large gains of school renovation and construction: improved air quality. Given this, district officials may be able to realize the gains of school infrastructure projects at lower costs through focused indoor air quality improvements.

2.2 Aliso Canyon Gas Leak

I now describe the Aliso Canyon gas leak and associated policy responses which provide the identifying variation in this paper whereby air filters were provided to schools within five miles of the gas leak. On October 23, 2015, employees of the Southern California Gas Company (SoCalGas) discovered a natural gas leak at the Aliso Canyon underground storage facility, the second-largest gas storage facility in the United States. The source of the leak was a metal pipe enclosed in a breached 7-inch casing in a well 8,750 feet deep. Initially, SoCalGas believed that the leak would soon be plugged and maintained that “the leak does not pose a health hazard or danger” (Wilcox, 2015). By November 25, however, SoCalGas had attempted six well ‘kill’ procedures to halt the gas leak with none being successful. At this time, officials realized the gas leak could not be plugged in a timely manner and, on December 4, SoCalGas began to drill a relief well similar to the one used to plug the Deepwater Horizon disaster. At the time, SoCalGas estimated the leak repair would take until the end of March 2016. In the end, the leak was halted ahead of schedule: State officials announced the leak was permanently plugged on February 18, 2016.

The gas leak generated substantial concerns in nearby Porter Ranch, a wealthy majority

white neighborhood in the northwest region of Los Angeles,¹² with nearby residents complaining of headaches, nausea, and severe nosebleeds. At the start of December, under court order from the county health department, SoCalGas paid to relocate nearly 350 households. A state of emergency was then declared by county officials on December 15, dramatically raising the number of relocated residents to about 2,500 by the end of December. At the start of January, SoCalGas expanded the voluntary relocation zone of residents to a five-mile radius of the leaking well. The five-mile radius only applied to the region south of the Aliso Canyon facility as the Santa Susana Mountains are immediately to the north and officials did not appear concerned that the gas leak would affect areas north of these mountains.¹³

According to SoCalGas, the five-mile radius was set by the furthest confirmed odor complaint received. Figure A.1 shows reported gas odor complaints as of December 29, 2015 with a circle representing five-miles from the gas leak superimposed. The figure indicates a substantial number of odor complaints north of the Ronald Reagan Freeway, which is about two miles south of the gas leak, with the number of complaints quickly dissipating beyond that point.

Assistance for Residents: Residents within this five-mile boundary received assistance in the form of reimbursement for any expenses associated with relocation, including accommodation costs and transportation costs to take their child to and from school. To aid residents that did not wish to relocate, SoCalGas also offered services to improve air quality inside homes, including installing air filters or scrubbers and weatherizing homes. Given that residents closer to the gas leak were likelier to evacuate, schools nearer to the gas leak presumably have more students who relocated. If moving negatively affects student performance, this implies that we expect there to be a positive relationship between student performance and distance to the leak, which will need to be controlled for. Previewing the empirical design, I will do so by controlling for distance to the leak. Section 4.2, however, shows robustness to alternative specifications including directly controlling for the percent of individuals who reside within five miles of the leak within a given school's attendance zone or utilizing no distance controls.

By the time the gas leak was halted, over 8,300 households had been relocated, 3,060 homes had received plug-in air filters, 5,300 homes had air scrubbers installed, and 5,200 homes had been weatherized.¹⁴ To place into context, the author calculates there were

¹²The median household income for Porter Ranch in 2016 was reported at \$114,826. The demographics of the neighborhood are about 60 percent White, 25 percent Asian, and 7.5 percent Hispanic.

¹³The unincorporated area of Stevenson Ranch and the city of Santa Clarita both lie north of the Santa Susana Mountains and are within five miles of the leak. The author cannot find any evidence that the voluntary relocation zone extended to these areas.

¹⁴See <https://www.sempra.com/newsroom/press-releases/aliso-canyon-gas-leak-incident-update-february-8-2016>.

145,000 residents occupying 46,500 residences within five miles of the gas leak.¹⁵ Given this, about twenty percent of eligible households evacuated and thirty percent of eligible households received some form of residential air quality improvement.

Response for Schools: Predictably, the gas leak also generated substantial concerns among school officials, especially as two elementary schools, Porter Ranch Community and Castlebay Lane Charter, were only 1.8 miles from the leak (the next closest school was 3.2 miles from the leak). In response, on December 15th LAUSD officials announced that these schools would close after December 18th (the start of winter break). Once winter break ended (January 12), students at these schools were relocated to Northridge Middle School and Sunny Brae Avenue Elementary.¹⁶ The empirical analysis omits students attending the four relocating and receiving schools due to possible disruptions caused by relocation (these four schools also lie outside the region that is 3.25-6.75 miles from the leak that comprises the main analysis sample).

The key policy treatment used in this paper was publicly announced by SoCalGas on January 28th,¹⁷ whereby SoCalGas stated they would “provide [plug-in] air purifiers in every classroom, office, and common area on all 18 campuses” (Laughton, 2016) within five miles of the gas leak. The number of plug-in air filters supplied was substantial: Granada Hills Charter High School, with an enrollment of 4,480 students, had 210 plug-in air purifiers installed in the school according to media reports (Blume, 2016). In addition, these schools could also request to have active carbon filters installed in all heating and air conditioning units if they did not already have them. While the policy was to install air filters in all schools within five miles of the gas leak, distance to the gas leak was rounded to the first decimal point.¹⁸ Given this rounding, I consider all schools within 5.05 miles of the gas leak to be inside the five-mile boundary used to determine whether air filters were received. While district and gas company officials confirmed that the plug-in air filters were delivered to the eighteen schools within five miles of the leak, the exact number of air filters supplied to each school is unknown (with the exception of Granada Hills Charter High School).¹⁹ After the leak was plugged, schools retained possession of the air filters, although it is unknown

¹⁵To do so, I use census block counts from the 2010 census. I exclude households north of the gas leak in these counts as they were not impacted (as discussed).

¹⁶To create space for the evacuated students, a substantial number of portable classrooms were used.

¹⁷While the public announcement was not made until January 28, SoCalGas and the LAUSD had reached an agreement to deliver the plug-in air filters on January 21.

¹⁸For instance, see Laughton (2016) which clearly rounds distances to the first decimal point. In addition, the only school whose treatment status is affected by the rounding (Andasol Avenue Elementary) received air filters even though it was 5.02 miles from the leak.

¹⁹While SoCalGas and the LAUSD jointly agreed on the delivery of the plug-in air filters, SoCalGas supplied them. Data on the number of air filters delivered to each school are thus held by SoCalGas who are regrettably unwilling to share data due to (substantial) ongoing litigation.

whether schools continued to use or maintain the units in subsequent years.²⁰

Figure 1 shows the region of interest, indicating all LAUSD elementary schools within seven miles of the leak and whether they received an air filter. The figure makes clear that all schools within five miles (rounded to the first decimal) of the gas leak received an air filter while all schools further than five miles did not. Middle schools and the nearest EPA air monitor (about three miles south of the five-mile boundary) are also indicated on the map. The main analysis sample consists of all elementary schools 3.25-6.75 miles from the leak, and so includes twenty-eight schools: eleven that received air filters and seventeen that did not.

Residential Assistance Rates Within Schools: The high rates of relocation among residents within five miles of the leak are likely to negatively impact student achievement.²¹ Given that this will be key to control for, Figure A.2(a) displays the map of school attendance zones in 2015-16 for the twenty-eight schools in the main analysis sample and denotes whether a given school received air filters or not. Given that relocation assistance is provided to individuals living within five miles of the leak, it is clear that schools located closed to the five-mile air filter eligibility threshold have attendance zones that cross the five-mile boundary and so receive a mix of children eligible and ineligible for relocation assistance.

Using the 2010 census, Figure A.2(b) shows the percent of the population within each school's attendance zone that resides within five miles of the leak by the distance of the school to the gas leak. As expected, schools near the five-mile boundary have a mix of students eligible and ineligible for relocation assistance. Of particular interest is that the school furthest from the gas leak that still received air filters, Andasol Avenue Elementary, has less than thirty percent of students eligible for relocation assistance, which is substantially less than other schools that received air filters. If relocation negatively affects student achievement, we might expect this school to perform particularly well since it both received air filters and had few students relocate (and indeed this is what we will observe).

School Air Testing: Air sampling was initiated at schools in response to the leak at the behest of the LAUSD. Specifically, Waterstone Environmental was hired to test for the presence of chemicals associated with natural gas, including volatile organic compounds.²²

²⁰For instance, one school principal stated that the plug-in air filters were eventually placed in storage as some teachers complained that they made the air too dry.

²¹Alternatively, the air quality improvements provided for homes within five miles of the leak could raise achievement. Given the positive relationship between distance to the leak and test scores in the data, however, it appears that the negative effects of relocation outweigh the positive effects of household air quality improvements.

²²Waterstone Environmental tested both directly for methane (the primary component of natural gas) as well as volatile organic compounds often found in natural gas such as benzene, toluene, ethylbenzene, and xylene. Tests were conducted using handheld monitors, Tedlar bags, and Summa canisters.

The two schools nearest the leak, Porter Ranch Community School and Castlebay Lane Charter School, had their air sampled every school day starting on November 30 until the end of the fall term on December 18.²³ Although no pollutants exceeded regulatory limits, the schools were relocated (as noted) in the spring and so no further testing was conducted in these schools until after the gas leak was plugged.

The remaining eighteen schools within five miles of the leak received air quality testing starting on January 19, 2016. Every school was tested at least twice, with some schools tested up to six times. The testing protocol appeared to test each school on two consecutive days and then rotate to the next school, which led to schools that were initially tested before January 29 being retested in mid-February before the leak was plugged on February 18.²⁴ Again, testing was limited to pollutants associated with natural gas such as methane, ethane, and benzene. Table A.1 displays the results from these tests, which show elevated levels of several pollutants such as ethane and methane in the two (evacuated) schools nearest the leak, but little relationship between distance to the leak and the measured pollutants thereafter. In addition, pollutant levels in these schools were not above normal readings (and well-below regulatory limits), indicating that it is unlikely schools near the five-mile boundary were exposed to above-normal levels of natural gas. This is in line with natural gas concentration readings from a gas analyzer driven around nearby Los Angeles neighborhoods by Phillips et al. (2016) (see Figure A.3).

3 Empirical Design and Data

In this section, I provide a detailed description of my strategy to estimate the effect of air filters on student achievement. The empirical strategy involves a spatial regression discontinuity (RD) design, which relies on the policy agreed by SoCalGas and the LAUSD that all schools within five miles of the gas leak (rounded to the first decimal) receive air filters. I follow with a brief discussion concerning the validity of the RD design in this context and how inference is conducted. The administrative data set that I use is then introduced.

3.1 Empirical Design

Whether a school receives air filters or not is a deterministic and discontinuous function of distance to the Aliso Canyon gas leak. Such an assignment rule lends itself naturally to a spatial regression discontinuity (RD) design. The design takes advantage of the rule that

²³The only school day testing was not conducted was on December 15 as all LAUSD schools were closed that day due to a terror threat.

²⁴Schools also appear to have been retested soon after if they had a benzene reading above 0.92 ppbv.

only schools within five miles (rounded to first decimal point) of the gas leak received air filters, while schools more than five miles away did not. The essence of the empirical strategy is to compare outcomes in schools just within five miles of the gas leak to those just further than five miles away. Given their geographical proximity, these schools should be similar on observable and unobservable dimensions and thus we can compare outcomes of students on either side of the five-mile policy boundary to capture the effect of air filters on student achievement.

In practice, few schools are ‘just’ around the five-mile boundary. To increase sample size for inference, the regression discontinuity design includes observations further away from the boundary and controls for the relationship between the outcome and distance to the gas leak. In this context, controlling for this relationship is necessary as the gas company offered reimbursement to families that decided to leave the immediate region due to concerns about the gas leak, but continued to send their children to the same schools (less than one percent of students near the leak switched schools during the 2015-16 academic year). Given that the probability of relocation is higher among residents closer to the leak and that students usually attend the zoned school near their house, schools closer to the gas leak are likely to have more relocated students. If moving negatively affects student performance, this implies that there will be a positive relationship between student performance and distance to the leak that must be accounted for.

The identifying assumption of the RD design is that, with the exception of air filters, all factors determining student outcomes are evolving smoothly with respect to distance from the gas leak. In a spatial RD, both latitude and longitude determine a school’s distance to the gas leak and thus we need to take into account that the five-mile policy boundary forms a multidimensional (rather than unidimensional) discontinuity in longitude-latitude space. Specifically, we want to ensure we only compare schools in close geographic proximity rather than just schools near the policy boundary: Intuitively, while a school 4.9 miles north and a school 5.1 miles south of the gas leak are just inside and outside the policy boundary, these schools are not in close geographic proximity (they are 10 miles apart) and so should not be directly compared. I deal with this issue in two ways: (i) including boundary segment fixed effects,²⁵ and (ii) using flexible controls of latitude-longitude space as in Dell (2010).

I therefore run the following regression:

$$y_{isb,2015-16} = \alpha + \beta D_s + f(location_s) + g(y_{isb,2014-15}) + \gamma X_{isb} + \phi_b + \epsilon_{isb,2015-16}, \quad (3.1)$$

where $y_{isb,2015-16}$ is the outcome (e.g., test score) of student i in school s along boundary

²⁵Specifically, I split the southern side of the five-mile boundary shown in Figure 1 into a western and eastern segment so that elementary schools receiving air filters are split evenly among the two segments.

segment b in the 2015-16 school year, D_s is a dummy variable equal to one if student i attends a school within five miles (rounded to first decimal point) of the gas leak, $f(location_s)$ flexibly controls for geographic location (various control functions are explored), $g(y_{isb,2014-15})$ is a flexible cubic polynomial of lagged test scores (interacted with grade dummies), X_{isb} are student demographics and fixed school characteristics, and ϕ_b are boundary segment fixed effects. Our coefficient of interest is β , which represents the effect of being just within five miles of the gas leak (and thus receiving air filters) compared to being just outside (and not receiving air filters).

To ensure that only nearby schools are compared, I restrict equation (3.1) to schools 3.25-6.75 miles of gas leak. This bandwidth is chosen so that all elementary schools that received air filters are included in the analysis, although sensitivity to this bandwidth is explored in Figure A.5 with results being qualitatively and quantitatively similar across various bandwidth selections. For graphical exposition, the paper’s main specification controls for geographic location, $f(location_s)$, using unidimensional distance to the gas leak along with boundary segment fixed effects, although I report results that control for latitude-longitude space instead in the main results table (Table 3). In addition, Table A.4 reports results using alternative functional forms along with results when no geographic controls are used.

Validity: The spatial regression discontinuity approach requires that all factors besides air filters that determine test scores are evolving smoothly with respect to distance from the gas leak (conditional on controls). This assumption is needed to ensure that students located just outside five miles of the leak are an appropriate counterfactual for those located just within. For example, it would be problematic if district officials chose the five-mile boundary strategically as student test scores were trending downward in schools just closer than five miles to the gas leak. This appears unlikely, however, as the radius was set by the furthest confirmed *odor* complaint received.

Another concern might arise that students could switch to a school with air filters after they were installed in January. For this reason, I assign students to schools based on the *fall* semester enrollment reports from the LAUSD, which eliminates the ability for students to sort in response to air filter installations (as air filters were not announced until the spring semester).

The plausibility of the assumption can also be assessed by checking whether observable covariates evolve smoothly with respect to distance from the gas leak near the five-mile boundary. To do so, I estimate equation (3.1) using observable student covariates (rather than test scores) as the dependent variable. Table A.2 shows that these covariates evolve smoothly at the five-mile boundary: there are no statistically significant discontinuities at the five-mile boundary in the twelve covariates investigated. The fact that the test-taking

rate (column (12)) evolves smoothly at the five-mile boundary also alleviates any concerns about differential selection around the boundary into the test-taking sample.

Standard errors: Given that treatment assignment is at the school level, it is natural for standard errors to be clustered at that level. Unfortunately, the main RD sample (with a bandwidth of 1.75 miles) has only twenty-eight schools. Such a small number of clusters can lead to overly optimistic standard errors and so all inference in the paper follows from clustering at the school level and using the wild cluster bootstrap procedure from Cameron, Gelbach, and Miller (2008).²⁶

3.2 Data

I use detailed administrative data from the Los Angeles Unified School District (LAUSD) which includes all public school students and teachers in the district. They contain information about the number of student absences along with detailed student demographics such as gender, race, age, parental education, English learner status, free or reduced price lunch status, and language spoken at home. Data also contain the ZIP Code of student residence, allowing for residential location to be controlled for using residential ZIP Code fixed effects.²⁷

Test scores for each student in mathematics and English Language Arts for grades 3-8 come from state standardized tests. I focus my analysis on the 2014-15 through 2016-17 school years, although data are available from 2005-06 through 2016-17 which I use for a placebo test (see Figure 3). Test score data for 2013-14 are missing, however, due to a change in testing regimes that year to align with the Common Core State Standards. Test score results from 2014-15 through 2016-17 come from online Smarter Balanced Assessments, a comprehensive end-of-year assessment in mathematics and English language arts of grade-level learning that consists of two parts: (i) a computer adaptive test, and (ii) a performance task. These tests are administered each spring²⁸ to all students except those whose Individualized Education Plan requires the student take an alternative assessment and those whose parents opt out.²⁹ I standardize these tests to have a mean of zero and a variance of one for each grade-year-subject cell.

To assign students to schools, I use the December enrollment reports to eliminate the possibility that students change schools in response to schools installing air filters. End-of-

²⁶The wild clustered bootstrap is implemented using the ‘boottest’ command from Roodman, Nielsen, MacKinnon, and Webb (2019) with 999 replications.

²⁷These ZIP Code boundaries are shown in Figure A.1. Each ZIP Code covers about eight square miles.

²⁸Testing dates vary school-to-school with the official testing window for 2015-16 extending from March 9 through June 10. Most schools conduct the tests in May, starting with English in the first two weeks followed by math in the final two weeks.

²⁹English learners who are in their first 12 months of attending a school in the United States are also not required to take the English language arts test.

year enrollment reports for June are also available and indicate few students switch schools: only 23/3945 students in the main analysis sample switch schools between the December and June enrollment reports.

I also obtain air quality measures from two sources. First, I gather school-level air testing results from all twenty schools within the five-mile policy boundary conducted in response to the gas leak.³⁰ Second, I obtain daily pollution readings for the 2015 and 2016 calendar years from the nearest EPA air quality monitor. This air monitor is located approximately 3 miles south of the five-mile gas leak boundary and is indicated on Figure 1. These data are used in Section 5 to interpret the generalizability of my results to other settings.

I focus my analysis on elementary schools as there are only seven middle schools in the region of interest 3.25-6.75 miles from the gas leak (there are twenty-eight elementary schools), leaving few middle schools in close proximity around the boundary. In addition, two of these middle schools are gifted/high ability magnet schools, which are unlikely to be comparable to other local schools since they draw the highest ability students from throughout Los Angeles. Regardless, I always include results with these schools in the main results table; results become more pronounced with their inclusion.

I make two additional data restrictions. First, due to potential disruptions, I omit students attending the two schools closest to the gas leak who were relocated in January as well as the two schools these students were relocated to (although all these schools lie outside the 3.25-6.75-mile main analysis sample). Second, I omit students attending the two independent elementary charter schools in the region of interest 3.25-6.75 miles from the gas leak as these schools were not part of the LAUSD-SoCalGas agreement due to their independence from the LAUSD.³¹

Summary statistics for the 2015-16 school year are reported in Table 1. Column (1) shows student characteristics for all students in the LAUSD. The LAUSD is a majority Hispanic district (about 75 percent), with white and black students each making up a further ten percent. In terms of socioeconomic status, almost 90 percent of LAUSD students receive free and reduced price lunch, with one-third of their parents being high school dropouts and less than one-quarter graduating college. Column (2) restricts the sample to observations that are within 1.75 miles of the five-mile boundary, which is the main sample that is used for the analysis. There are substantial differences between these students and LAUSD as a whole, coming from the fact the neighborhoods near the gas leak are some of the wealthiest in Los Angeles. Correspondingly, students in this area score 0.35σ higher on end-of-grade

³⁰Air testing results are available at <https://achieve.lausd.net//site/Default.aspx?PageID=10329>.

³¹These schools could, however, have separately requested air filters from SoCalGas although I have no record of the one independent charter school in the five-mile zone receiving air filters. Results are qualitatively and quantitatively similar if these schools are included and are available upon request.

standardized tests and are far more advantaged, with almost 40 percent coming from college graduate households and only 75 percent of them receiving free and reduced price lunch. These students are also much more likely to be white and Asian and far less likely to be Hispanic or black. Column (3) further restricts the spatial RD sample to students with valid current and lagged math scores. This sample is similar to that in column (2) and represents the main analysis sample, which consists of 4,861 students.

4 Results

This section starts with descriptive evidence relating to the impact of air filters on pollutants measured by air testing that was conducted inside schools. Then, estimates of the effect of air filters on student achievement along with their persistence are provided. Robustness of the results to outliers, functional form, and bandwidth is also examined along with a placebo test whereby the spatial RD is run each year in the decade preceding the gas leak.

4.1 Main Results

Air Filters and Measured Pollutants: Delivery of plug-in air filters for schools within five miles of the leak was announced on January 28th and air quality testing at these schools was conducted January 19-February 22. Given this, eight schools had their air tested both before *and* after the plug-in air filters were delivered, affording the opportunity to study the impact of the air filters on tested pollutant levels.³² While air testing was restricted to methane (primary component of natural gas) and volatile organic compounds (namely benzene, toluene, ethylbenzene and xylene) rather than particulate matter which has been the focus of much of the literature, we can still check whether air filters reduced the concentration of these pollutants.

Table 2 reports levels of these pollutants before and after the plug-in air filters were delivered among these eight schools. A clear pattern emerges whereby pollutant levels fall after the air filters were provided. The final row aggregates these results by regressing pollutant levels on an indicator for the period after the air filters were delivered along with school fixed effects.³³ The reduction in methane and volatile organic compounds concentrations

³²The exact date of delivery is unknown, so I omit tests conducted Jan 28-Feb 5 to allow for a one week ‘delivery and installation’ window. Table A.1 also reports the number of times each school within five miles of the leak was tested and the maximum reading of each pollutant at these schools.

³³Specifically, it reports the result of the following regression: $pollutant_{st} = \alpha_s + \beta_1 \mathbb{1}\{AfterFilter\}_t + \epsilon_{st}$, where $pollutant_{st}$ is the pollutant level, $\mathbb{1}\{AfterFilter\}_t$ is a post air filter delivery indicator which equals one if date is after Feb 5 (and zero before Jan 28), and α_s are school fixed effects.

are large and statistically significant: methane levels dropped by 17 percent, while volatile organic compounds levels fell by 60-100 percent (depending on the compound), a number in line with the 52-73 percent removal performance of plug-in air filters for benzene found in Polidori et al. (2013).³⁴ Given the fall in these pollutants, we would expect the air filters to deliver a similar decrease in particulate matter (although the effect of air filters cannot be attributed to a decline in any particular pollutant).

Air Filters and Student Performance: Figure 2 provides a visual representation of the spatial RD design by plotting test score growth by distance to the Aliso Canyon gas leak. *A priori*, we expect test score growth will be increasing in distance to the gas leak because residents closer to the leak were likelier to relocate, causing a disruption which would presumably lower student performance. As expected, student test score growth is increasing in the distance of their school to the gas leak. Once the distance to the gas leak (rounded to the first decimal point) exceeds five miles, we see a substantial drop in test score growth in both math and English. As this is the point where air filters were no longer installed in schools, this provides clear and convincing evidence that air filters substantially raised test scores.

Table 3 reports these findings in regression form using equation (3.1). As was apparent from Figure 2, students who attend a school within five miles of the gas leak see a substantial increase in test scores. Column (1) reports a basic specification with only lagged test scores as controls, while columns (2) and (3) add demographic controls and residential ZIP Code fixed effects, respectively. Point estimates are remarkably similar across specifications: air filters raised scores by 0.18-0.20 σ in both math and English. Results remain consistent once geographic latitude and longitude controls are added in column (4) and middle schools are included in column (5). Standard errors clustered at the school level are reported in parentheses below the point estimates. Given concerns about the number of clusters, however, I conduct all inference using the wild clustered bootstrap procedure, clustering at the school level (Cameron et al., 2008): p-values from this procedure are reported in square brackets.³⁵ For all specifications, results are statistically significant at the five percent level for math, although they are generally not statistically significant for English.

Persistence: Table 4 reports the effect of air filters installed in January 2016 on student achievement at the end of the 2016-17 school year. Specifically, I alter the regression equation

³⁴Polidori et al. (2013) focus on particulate matter, although do provide limited results for volatile organic compounds. Unfortunately, the data recovery for the summa canisters was “insufficient to guarantee an adequate interpretation of the results” at two of the three schools. Results are therefore only reported for one school, with benzene being the only individual volatile organic compound results are reported for.

³⁵P-values rather than standard errors are reported for the wild clustered bootstrap since it generates asymmetric confidence intervals.

described in equation (3.1) by replacing the dependent variable $y_{isb,2015-16}$ with $y_{isb,2016-17}$. Columns (1) and (2) report the results and show that air filters installed in January 2016 raised 2016-17 test scores by 0.09σ in math, although these results are not statistically significant.

These longer-run results are difficult to interpret, however, for two reasons. First, while schools continue to have the plug-in air filters in future years, it is unclear whether they continued to maintain and operate them. Second, fifth grade students in 2015-16 have transitioned to a new school for 2016-17 and these new schools may be outside the five-mile boundary and so did not receive air filters.³⁶ Given that, many students who did not have air filters in 2015-16 received air filters in 2016-17 (and vice versa), with 52 percent of fifth grade students in 2015-16 who were in a school without an air filter moving to a middle school with air filters in 2015-16. Since a large number of fifth grade students without air filters in 2015-16 enter middle schools with air filters in 2016-17, there will be a large jump in test scores among these students, causing the estimated discontinuity based on 2015-16 school assignment to fall. Indeed, I find that the impact of air filters in 2016-17 for fifth grade students in 2015-16 is not statistically different from zero (and is actually negative).³⁷

Column (3) excludes these students who switch schools due to the transition to middle school, leaving us with only fifth grade students (who were in fourth grade in 2015-16).³⁸ These students almost entirely remained in the same school, with only one percent of them switching from a school without air filters to schools with them (or vice versa). For these students, I find that the impact of air filters persists into 2016-17: The spatial RD estimate indicates two years of air filter exposure raises math scores by 0.26σ among these students, although this effect is only statistically significant at the ten percent level. The effect remains statistically significant at the ten percent level in column (5) once non-transitioning middle school students are also included (i.e., sixth and seventh grade students in 2015-16). A similar story arises for English scores, although the point estimates are smaller and never statistically differ from zero.

³⁶All elementary schools that are 3.25-6.75 miles from the gas leak have a K-5 grade span.

³⁷While not statistically significant, a negative point estimate could potentially arise in this situation for two reasons: (i) test score convergence between ‘treated’ and ‘untreated’ students due to their mixing in sixth grade (i.e., SUTVA assumption is violated among these students), or (ii) behavioral responses if, for instance, students who were surprised by their high scores in 2015-16 reduced their effort.

³⁸Fourth grade students in 2016-17 are not included as they lack lagged test scores (as there was no second grade test in 2014-15).

4.2 Robustness

I examine the robustness of the above results by running placebo tests that estimate the effect of being within five miles of the gas leak in years before the leak actually happened, checking sensitivity to outliers, varying the control function for geographic location, and altering the chosen bandwidth.

Placebo Test: Figure 3 estimates the impact of being within five miles of the gas leak for the preceding decade. Note that the 2013-14 and 2014-15 school years are omitted due to the lack of test score data in 2013-14 (implying no lagged test scores for 2014-15). The figure shows that the largest estimated impact of being within five miles of the gas leak occurs in 2015-16, the year when the air filters were installed. Indeed, the estimated effect of being within five miles of the gas leak in all other years is not statistically different from zero (and is mostly negative).

Outliers: In 2015-16, the school furthest from the gas leak that still received air filters, Andasol Avenue Elementary, had a tremendous 0.35σ and 0.20σ growth in math and English scores, respectively. This school is unique in another dimension: only thirty percent of its students reside within five miles of the gas leak and so the majority of its student body is ineligible for relocation assistance (see Figure A.2(b)). This level is far below the other schools that received air filters. Given that student achievement is negatively related to proximity to the gas leak – likely due to households taking up relocation assistance – we might expect this school to perform particularly well since it both received air filters and had few students relocate.

To ensure that results are not driven entirely from this one outlier, however, I rerun the results excluding the 132 students at this school from the analysis. Figure A.4 plots test score growth by distance to the Aliso Canyon gas leak (as in Figure 2) but omits Andasol Avenue Elementary from the figure. As before, once the distance to the gas leak exceeds five miles we see a drop in test score growth, although the drop is smaller in magnitude than what was seen previously (especially for English). Table A.3 then recreates the main RD results from Table 3 omitting students from Andasol Avenue Elementary. For mathematics, estimates fall but remain statistically significant across all specifications considered. For instance, the preferred estimate from column (3), which controls for demographics and ZIP Code fixed effects, falls from 0.20σ to 0.14σ with Andasol Avenue Elementary excluded, but remains statistically significant at the five percent level using the wild clustered bootstrap procedure for inference (p-value=0.037). English scores similarly fall from 0.19σ to 0.12σ (and remain statistically insignificant).

Functional Form: Table A.4 shows robustness of the main results to using various functional forms to control for geographic location. To start, column (1) estimates equation

(3.1) without *any* geographic controls and so just regresses an air filter receipt dummy on test scores (along with controls for lagged test scores and demographics). Point estimates are generally halved when geographic location is not controlled for, but results remain statistically significant. Column (2) similarly does not account for geographic location, but tries to incorporate residential evacuations by controlling for the percent of the population within a school’s attendance zone residing within five miles of the leak. This control leads to larger point estimates relative to our main specification, which is presented in column (3). Columns (4) and (5) report estimates controlling for distance from the five-mile boundary using a quadratic and a triangular kernel as the functional form (rather than linear). Estimates using these functional forms are larger (although not statistically significantly so), as they give greater weight to schools nearest the boundary, one of which had a very large increase in test score growth (see ‘outliers’ heading). Overall, estimates appear consistent across different functional forms and range between $0.10\text{-}0.25\sigma$ for both math and English.

Bandwidth: Figure A.5 plots spatial RD estimates using various bandwidths from 0.75 to 2.5 miles.³⁹ For both math and English, magnitudes decline with bandwidth size since larger bandwidths reduce the impact of the final school within the five-mile radius with the large test score increase (see ‘outliers’ heading). The effect for math remains statistically different from zero for all bandwidths considered, with the effect size ranging from $0.15\text{-}0.3\sigma$. English scores similarly range between $0.1\text{-}0.35\sigma$, but are only significantly different from zero at bandwidths below 1.5 miles.

5 Discussion

While the results above indicate air filters substantially improve student achievement in this particular context, a natural question arises as to whether these effects extend to other settings. Here, I highlight two context-specific features of this study and discuss whether these limit external validity: (i) the presence of the gas leak, and (ii) the level of ambient air pollution. I end the section with a suggestive cost-benefit exercise.

5.1 External Validity

Presence of Natural Gas: One particular concern for external validity is that schools in this setting are situated near the largest gas leak in United States history, which might make air filters particularly effective since they are filtering out pollutants from the natural gas

³⁹Extending the bandwidth beyond 1.75 miles just incorporates some additional schools that did not receive filters since there are no schools that received air filters closer than 3.25 miles from the leak.

leak (e.g., methane) that are unlikely to be in such concentrations elsewhere. To investigate this, I use the fact that air testing was conducted at all schools within five miles of the leak to check for the presence of dangerous levels of pollutants associated with natural gas. Here, as noted, these air quality tests checked for air pollutants associated with natural gas rather than indoor air quality in general.

Air testing initially began in the two schools nearest to the leak at the end of November. These schools were tested every school day from November 30 until December 18, when they were closed for Christmas break and students were subsequently relocated. Both schools showed elevated levels of methane, ethane and xylenes, although all were well-below the regulatory limit from the California Office of Environmental Health Hazard Assessment. After Christmas break, air testing was done for the remaining eighteen schools within five miles of the gas leak between mid-January through mid-February. Many of these tests were thus conducted before the plug-in air filters were delivered around January 28. For each school, testing was conducted at least two times, with five schools receiving three or four tests and three schools receiving five or six tests.

Table A.1 reports the maximum reported value for six tested pollutants over the tests at a given school. While methane, ethane, and xylenes levels appear elevated for the two schools nearest the gas leak (that were subsequently closed), the remainder of the schools do not appear to have inflated levels of pollutants. In addition, no relationship is apparent between the distance of the school to the leak and air pollutants, suggesting that pollution from the gas leak was not substantially affecting air quality within these schools.

These air testing results agree with results from a laser-based methane detector that was driven around Los Angeles neighborhoods, as documented in Phillips et al. (2016). The researchers reported these results with images on the Home Energy Efficiency Team (HEET) website,⁴⁰ with Figure A.3 showing one such visualization. The image makes clear that the natural gas is concentrated north of the Ronald Reagan Freeway, which is about two miles south of the gas leak. Since the schools that are analyzed are all over 3.5 miles from the gas leak, it appears that methane concentrations are not abnormally high for these schools, aligning with the results from the in-school air testing.

Pollution Levels in Los Angeles: Air quality in Southern California is known to be some of the worst in the United States, indicating that air filters might be particularly effective in this region. The gas leak occurred in Porter Ranch, however, which is known for having some of the cleanest air in the San Fernando Valley. Readings from the nearest air

⁴⁰Photographs from this imaging are available at <https://web.archive.org/web/20160712201258/http://www.heetma.org/porter-ranch-gas-leak-images/> and a video showing these visualizations is also available at <https://www.youtube.com/watch?v=aU1pmzKPCcE>.

monitor to the gas leak indicate $\text{PM}_{2.5}$ concentrations of $7.33\mu\text{g}/\text{m}^3$ from January to June 2016 and an annual mean $\text{PM}_{2.5}$ concentration for 2016 of $9.12\mu\text{g}/\text{m}^3$. In comparison, annual mean $\text{PM}_{2.5}$ concentrations in 2018 for other highly-populated cities in the United States were: $9.54\mu\text{g}/\text{m}^3$ in New York City, $9.63\mu\text{g}/\text{m}^3$ in Chicago, $10.63\mu\text{g}/\text{m}^3$ in Houston, and $7.95\mu\text{g}/\text{m}^3$ in Philadelphia.⁴¹ Ambient air pollution (as measure by $\text{PM}_{2.5}$) thus exceeds that in our region of analysis in three of the four largest cities in the United States (excluding Los Angeles), indicating that air filters have the potential to benefit a substantial number of schools across the country.

5.2 Cost-Benefit Analysis

To assess whether installing air filters in schools is worthwhile, the cost of filters must also be considered. The air filters that were installed cost approximately \$700 per unit,⁴² which I assume (conservatively) last five years.⁴³ In addition, the activated carbon in these air filters must be replaced yearly at a cost of \$300, and running the filter adds around \$24 a month to the electricity bill in high-cost electricity regions.⁴⁴ The cost of installing and operating a single air filter during the academic year is thus approximately \$680 ($\approx 700/5 + 300 + 24*10$). Air filters in this setting were also installed in common areas and offices in the school: Given this, I calculate that 1.5 air filters are required for each classroom.⁴⁵ I therefore (conservatively) estimate that the yearly cost per class to install air filters throughout a school is \$1,000.

Consequently, air filters raise test scores by about 0.2σ per \$1,000 of expenditure. This benefit-to-cost ratio is extraordinarily high when compared to other expenditures policymakers might consider to raise test scores. Krueger (1999), for instance, finds that reducing class sizes by seven students (from a base of twenty-two) raises test scores by 0.2σ . To reduce class size by this amount requires about one additional teacher for every two classes, signifying a substantial cost as teacher earn, on average, almost \$75,000 per year in Los Angeles (excluding benefits). The benefit-to-cost ratio of air filters is therefore over twenty times that

⁴¹Annual $\text{PM}_{2.5}$ concentrations for these cities came from the air monitor nearest to the city center.

⁴²The \$700 per unit cost comes from statements made by SoCalGas' Vice President of Customer Services (Gillian Wright) during meetings with the Porter Ranch Community Advisory Committee. Minutes of these meetings are available at <http://www.prcac.com/committee-meetings/>.

⁴³This is a very conservative assumption given that high-end air filters often come with a ten-year warranty.

⁴⁴Electricity cost estimates come from https://ww3.arb.ca.gov/research/indoor/aircleaners/air_cleaners_gas_leak.htm.

⁴⁵Unfortunately, the number of air filters supplied to each school is only known for Granada Hills Charter High School (from a press release), which received 210 plug-in air filters. Given average class size at this school is 30.5 and there were 4,480 students, this suggests delivery of 1.43 ($= 210/(4480/30.5)$) air filters per classroom to cover offices and common areas. Conservatively, this suggests schools need about 1.5 air filters per classroom.

of the class size reduction policy considered by Krueger (1999). Indeed, a benefit-to-cost ratio of 0.2σ per \$1,000 of expenditure indicates air filter installation might well be the most cost-efficient (in terms of dollar per test score) educational intervention available to policymakers, outperforming the cost-effectiveness of notable interventions such as high dosage tutoring (Cook et al., 2015), Perry Preschool (Schweinhart et al., 2005), cash transfers from the EITC (Dahl and Lochner, 2012), and Head Start (Ludwig and Phillips, 2007).

6 Conclusion

This paper has taken advantage of a unique policy setting arising from the largest gas leak in United States history to estimate the effect of air filters on student achievement. To do so, I used a spatial regression discontinuity design to exploit the fact that all schools within five miles of the leak received air filters. I found that installing air filters in schools raised student achievement substantially, increasing test scores in mathematics and English by 0.20σ .

Next, I showed that the unique setting analyzed does not limit the external validity of the results. I found few pollutants associated with natural gas in schools in the region of analysis, suggesting that the air filters are not generating large improvements in test scores by filtering out abnormal amounts of natural gas pollutants that are unlikely to be present elsewhere. The ambient air pollution near the leak is also relevant for many large cities, with the three largest cities in the United States (excluding Los Angeles) having higher levels of particulate air pollution.

My analysis complements prior research which has established that air pollution negatively affects student health and cognition by analyzing a policy that can improve the air quality faced by students. Furthermore, air filter installation is low in cost, allowing for the negative effects of pollution to be partially offset at costs far lower than large-scale air improvement policies. Indeed, with a benefit-to-cost ratio of 0.2σ increase in test scores per \$1,000 of expenditure, air filter installation is one of the most cost-effective education policies available to policymakers today. In addition, the negative effects of air pollution are not spread evenly across the United States population. Specifically, economically disadvantaged students disproportionately attend schools in highly-polluted regions. Given this fact, installing air filters in polluted regions should both raise student achievement and reduce the pervasive test score gaps that plague public education.

References

- Almond, Douglas, Janet Currie, and Valentina Duque (2018), “Childhood circumstances and adult outcomes: Act II.” *Journal of Economic Literature*, 56, 1360–1446.
- Anderson, Michael L. (forthcoming), “As the wind blows: The effects of long-term exposure to air pollution on mortality.” *Journal of the European Economic Association*.
- Austin, Wes, Garth Heutel, and Daniel Kreisman (2019), “School bus emissions, student health and academic performance.” *Economics of Education Review*, 70, 109–126.
- Beatty, Timothy K.M. and Jay P. Shimshack (2011), “School buses, diesel emissions, and respiratory health.” *Journal of Health Economics*, 30, 987–999.
- Bharadwaj, Prashant, Matthew Gibson, Joshua Graff Zivin, and Christopher Neilson (2017), “Gray matters: Fetal pollution exposure and human capital formation.” *Journal of the Association of Environmental and Resource Economists*, 4, 505–542.
- Blume, Howard (2016), “Schools within 5 miles of gas leak getting air purifiers.” *Southern California Public Radio*, URL <https://www.latimes.com/local/lanow/la-me-ln-air-purifiers-for-schools-near-porter-ranch-20160128-story.html>.
- Cameron, A. Colin, Jonah B. Gelbach, and Douglas L. Miller (2008), “Bootstrap-based improvements for inference with clustered errors.” *Review of Economics and Statistics*, 90, 414–427.
- Chang, Tom, Joshua Graff Zivin, Tal Gross, and Matthew Neidell (2016), “Particulate pollution and the productivity of pear packers.” *American Economic Journal: Economic Policy*, 8, 141–69.
- Chang, Tom Y., Joshua Graff Zivin, Tal Gross, and Matthew Neidell (2019), “The effect of pollution on worker productivity: Evidence from call center workers in China.” *American Economic Journal: Applied Economics*, 11, 151–72.
- Chay, Kenneth, Carlos Dobkin, and Michael Greenstone (2003), “The Clean Air Act of 1970 and adult mortality.” *Journal of Risk and Uncertainty*, 27, 279–300.
- Chay, Kenneth Y. and Michael Greenstone (2003), “The impact of air pollution on infant mortality: Evidence from geographic variation in pollution shocks induced by a recession.” *Quarterly Journal of Economics*, 118, 1121–1167.

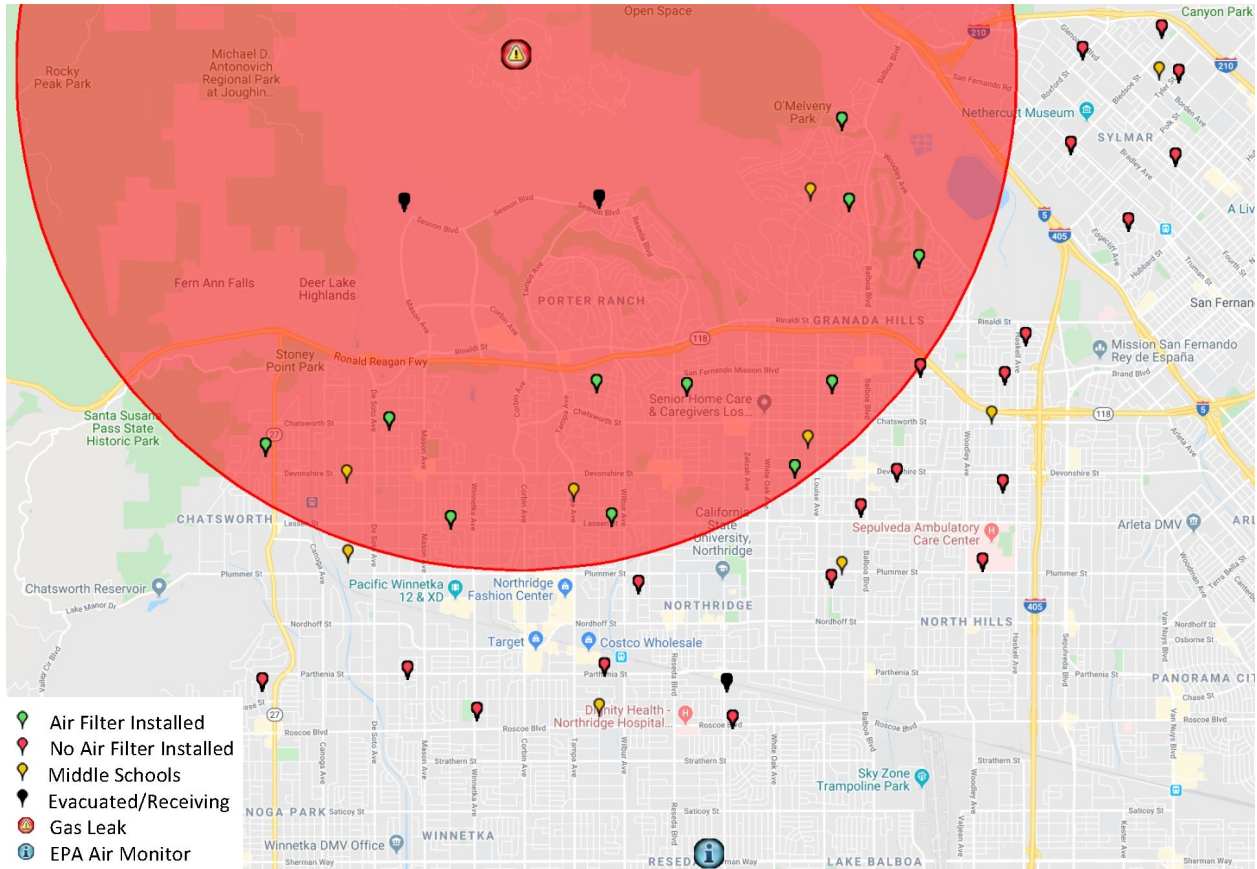
- Clark, Lara P., Dylan B. Millet, and Julian D. Marshall (2014), “National patterns in environmental injustice and inequality: Outdoor NO₂ air pollution in the United States.” *PLOS ONE*, 9, e94431.
- Clark, Lara P., Dylan B. Millet, and Julian D. Marshall (2017), “Changes in transportation-related air pollution exposures by race-ethnicity and socioeconomic status: Outdoor nitrogen dioxide in the United States in 2000 and 2010.” *Environmental Health Perspectives*, 125, 097012.
- Conley, Stephen, G. Franco, I. Faloon, Donald R. Blake, J. Peischl, and T.B. Ryerson (2016), “Methane emissions from the 2015 Aliso Canyon blowout in Los Angeles, CA.” *Science*, 351, 1317–1320.
- Cook, Philip J., Kenneth Dodge, George Farkas, Roland G. Fryer, Jonathan Guryan, Jens Ludwig, and Susan Mayer (2015), “Not too late: Improving academic outcomes for disadvantaged youth.” Northwestern University Working Paper WP-15-01, Institute for Policy Research, URL <https://www.ipr.northwestern.edu/our-work/working-papers/2015/ipr-wp-15-01.html>.
- Currie, Janet, Lucas Davis, Michael Greenstone, and Reed Walker (2015), “Environmental health risks and housing values: Evidence from 1,600 toxic plant openings and closings.” *American Economic Review*, 105, 678–709.
- Currie, Janet, Eric A. Hanushek, E. Megan Kahn, Matthew Neidell, and Steven G. Rivkin (2009a), “Does pollution increase school absences?” *Review of Economics and Statistics*, 91, 682–694.
- Currie, Janet and Matthew Neidell (2005), “Air pollution and infant health: What can we learn from California’s recent experience?” *Quarterly Journal of Economics*, 120, 1003–1030.
- Currie, Janet, Matthew Neidell, and Johannes F. Schmieder (2009b), “Air pollution and infant health: Lessons from New Jersey.” *Journal of Health Economics*, 28, 688–703.
- Currie, Janet, John Voorheis, and Reed Walker (2020), “What caused racial disparities in particulate exposure to fall? New evidence from the Clean Air Act and satellite-based measures of air quality.” Working Paper 26659, National Bureau of Economic Research, URL <http://www.nber.org/papers/w26659>.
- Currie, Janet and Reed Walker (2011), “Traffic congestion and infant health: Evidence from E-ZPass.” *American Economic Journal: Applied Economics*, 3, 65–90.

- Dahl, Gordon B. and Lance Lochner (2012), “The impact of family income on child achievement: Evidence from the Earned Income Tax Credit.” *American Economic Review*, 102, 1927–56.
- Dell, Melissa (2010), “The persistent effects of Peru’s mining Mita.” *Econometrica*, 78, 1863–1903.
- Deryugina, Tatyana, Garth Heutel, Nolan H. Miller, David Molitor, and Julian Reif (2019), “The mortality and medical costs of air pollution: Evidence from changes in wind direction.” *American Economic Review*, 109, 4178–4219.
- Ebenstein, Avraham, Victor Lavy, and Sefi Roth (2016), “The long-run economic consequences of high-stakes examinations: Evidence from transitory variation in pollution.” *American Economic Journal: Applied Economics*, 8, 36–65.
- Graff Zivin, Joshua and Matthew Neidell (2012), “The impact of pollution on worker productivity.” *American Economic Review*, 102, 3652–73.
- Graff Zivin, Joshua and Matthew Neidell (2013), “Environment, health, and human capital.” *Journal of Economic Literature*, 51, 689–730.
- Hashim, Ayesha K., Katharine O. Strunk, and Julie A. Marsh (2018), “The new school advantage? Examining the effects of strategic new school openings on student achievement.” *Economics of Education Review*, 62, 254–266.
- Heft-Neal, Sam, Jennifer Burney, Eran Bendavid, Kara Voss, and Marshall Burke (2019), “Air pollution and infant mortality: Evidence from Saharan dust.” Working Paper 26107, National Bureau of Economic Research, URL <http://www.nber.org/papers/w26107>.
- Heissel, Jennifer, Claudia Persico, and David Simon (forthcoming), “The impact of accumulated and acute exposure to traffic pollution on child academic outcomes.” *Journal of Human Resources*.
- Isen, Adam, Maya Rossin-Slater, and W. Reed Walker (2017), “Every breath you take – every dollar you’ll make: The long-term consequences of the Clean Air Act of 1970.” *Journal of Political Economy*, 125, 848–902.
- Knittel, Christopher R., Douglas L. Miller, and Nicholas J. Sanders (2016), “Caution, drivers! Children present: Traffic, pollution, and infant health.” *Review of Economics and Statistics*, 98, 350–366.

- Krueger, Alan B. (1999), “Experimental estimates of education production functions.” *Quarterly Journal of Economics*, 114, 497–532.
- Künn, Steffen, Juan Palacios, and Nico Pestel (2019), “Indoor air quality and cognitive performance.” Discussion Paper 12632, IZA Institute of Labor Economics, URL <https://www.iza.org/publications/dp/12632>.
- Lafortune, Julien and David Schönholzer (2019), “Measuring the efficacy and efficiency of school facility expenditures.” URL https://www.dropbox.com/s/lh2i104uqigg0vj/lafortune_schonholzer_laUSD.pdf?dl=0. Unpublished.
- Laughton, Robert (2016). Interoffice Correspondence, URL <https://achieve.lausd.net/cms/lib/CA01000043/Centricity/Domain/135/Informative%20re%20Aliso%20Canyon%20Gas%20LeakUpdate%20%2001%2021%2016.pdf>.
- Lleras-Muney, Adriana (2010), “The needs of the army: Using compulsory relocation in the military to estimate the effect of air pollutants on children’s health.” *Journal of Human Resources*, 45, 549–590.
- Ludwig, Jens and Deborah A. Phillips (2007), “The benefits and costs of Head Start.” Social Policy Report 3, Society for Research on Child Development.
- Madureira, Joana, Inês Paciência, and Eduardo de Oliveira Fernandes (2012), “Levels and indoor-outdoor relationships of size-specific particulate matter in naturally ventilated Portuguese schools.” *Journal of Toxicology and Environmental Health, Part A*, 75, 1423–1436.
- Marcotte, Dave E. (2017), “Something in the air? Air quality and children’s educational outcomes.” *Economics of Education Review*, 56, 141–151.
- Mumovic, Dejan, Lia Chatzidiakou, Joe Jack Williams, and Esfand Burman (2018), “Indoor air quality in London’s schools.” Commissioned report, Greater London Authority, URL <https://www.london.gov.uk/WHAT-WE-DO/environment/environment-publications/indoor-air-quality-report>.
- Neidell, Matthew J. (2004), “Air pollution, health, and socio-economic status: The effect of outdoor air quality on childhood asthma.” *Journal of Health Economics*, 23, 1209–1236.
- Neilson, Christopher A. and Seth D. Zimmerman (2014), “The effect of school construction on test scores, school enrollment, and home prices.” *Journal of Public Economics*, 120, 18–31.

- Persico, Claudia L and Joanna Venator (2019), “The effects of local industrial pollution on students and schools.” *Journal of Human Resources*, 0518–9511R2.
- Phillips, Nathan, Bob Ackley, and Rob Jackson (2016), “Porter ranch gas leak images.” URL <https://web.archive.org/web/20160712201258/http://www.heetma.org/porter-ranch-gas-leak-images/>.
- Polidori, A., P.M. Fine, V. White, and P.S. Kwon (2013), “Pilot study of high-performance air filtration for classroom applications.” *Indoor Air*, 23, 185–195.
- Roodman, David, Morten Ørregaard Nielsen, James G. MacKinnon, and Matthew D. Webb (2019), “Fast and wild: Bootstrap inference in STATA using boottest.” *Stata Journal*, 19, 4–60.
- Roth, Sefi (2019), “The effect of indoor air pollution on cognitive performance: Evidence from the UK.” URL <http://personal.lse.ac.uk/roths/JMP.pdf>. Unpublished.
- Sanders, Nicholas J. (2012), “What doesn’t kill you makes you weaker: Prenatal pollution exposure and educational outcomes.” *Journal of Human Resources*, 47, 826–850.
- Sanders, Nicholas J. and Charles Stoecker (2015), “Where have all the young men gone? Using sex ratios to measure fetal death rates.” *Journal of Health Economics*, 41, 30–45.
- Schlenker, Wolfram and W. Reed Walker (2015), “Airports, air pollution, and contemporaneous health.” *Review of Economic Studies*, 83, 768–809.
- Schweinhart, Lawrence J., Jeanne Montie, Zongping Xiang, W. Steven Barnett, Clive R. Belfield, and Milagros Nores (2005), *Lifetime Effects: The High/Scope Perry Preschool Study Through Age 40*. High/Scope Press, Ypsilanti, Michigan.
- Simeonova, Emilia, Janet Currie, Peter Nilsson, and Reed Walker (forthcoming), “Congestion pricing, air pollution and children’s health.” *Journal of Human Resources*.
- Stafford, Tess M. (2015), “Indoor air quality and academic performance.” *Journal of Environmental Economics and Management*, 70, 34–50.
- Voorheis, John (2017), “Longitudinal environmental inequality and environmental gentrification: Who gains from cleaner air?” Technical report, Center for Economic Studies, US Census Bureau.
- Wilcox, Greg (2015), “Crew makes another attempt to stop gas leak in porter ranch.” *Los Angeles Daily News*, URL <https://www.dailynews.com/2015/11/06/crew-makes-another-attempt-to-stop-gas-leak-in-porter-ranch/>.

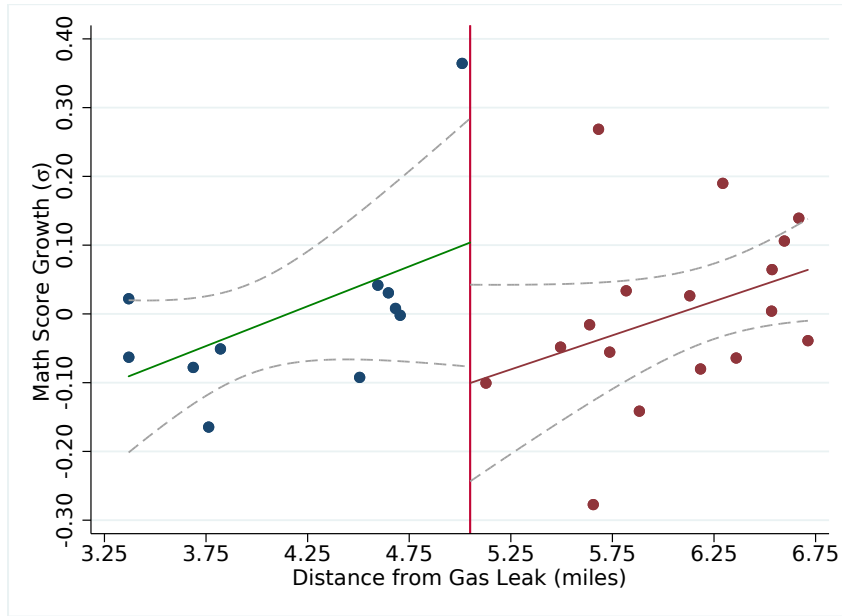
Figure 1: Map of Region of Interest



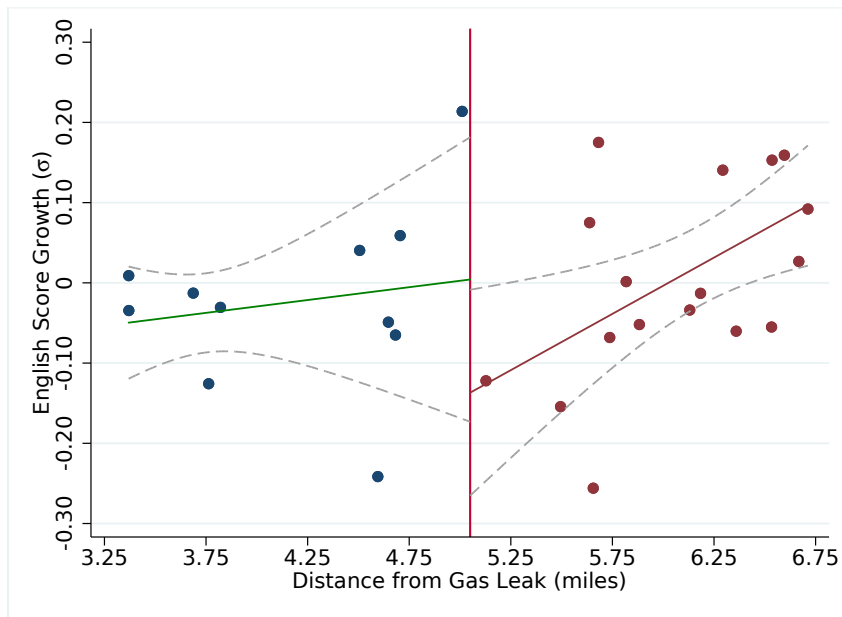
Notes: This figure shows the location of all 34 elementary schools in the Los Angeles Unified School District within seven miles of the Aliso Canyon gas leak. The 11 elementary schools that received air filters are denoted with a green pin, while I denote the 20 schools that did not receive air filters with a red pin (of which 17 are within 6.75 miles of the leak and so are included in the main analysis sample). Schools that were evacuated (two schools nearest to the gas leak) or received evacuated students (only one school noted in figure as the other school receiving evacuees is further than 7 miles from the leak) are denoted with black pins and are excluded from all analysis. The 9 middle schools within seven miles of the leak are indicated with an orange pin (of which 7 are within 3.25-6.75 miles of the leak). Five independent charter schools (two elementary and three middle schools) were omitted from the figure as they were not part of the LAUSD-SoCalGas air filter agreement (of these, only two schools are within the 3.25-6.75-mile main analysis region). The red circle indicates a five mile (rounded to first decimal point) radius from the gas leak. The location of the gas leak and the location of the nearest EPA air monitor are also shown.

Figure 2: Test Score Growth by Distance to Leak

(a) Math Score Growth



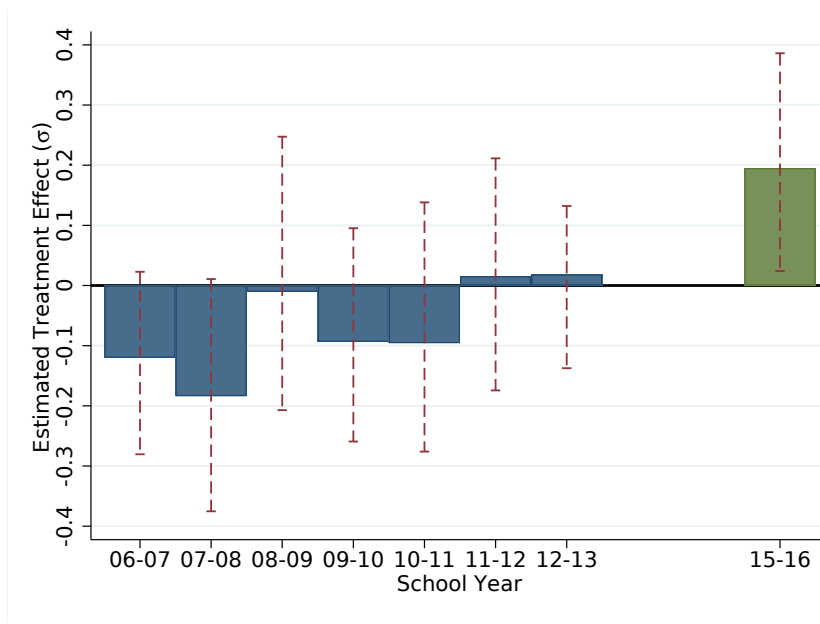
(b) English Score Growth



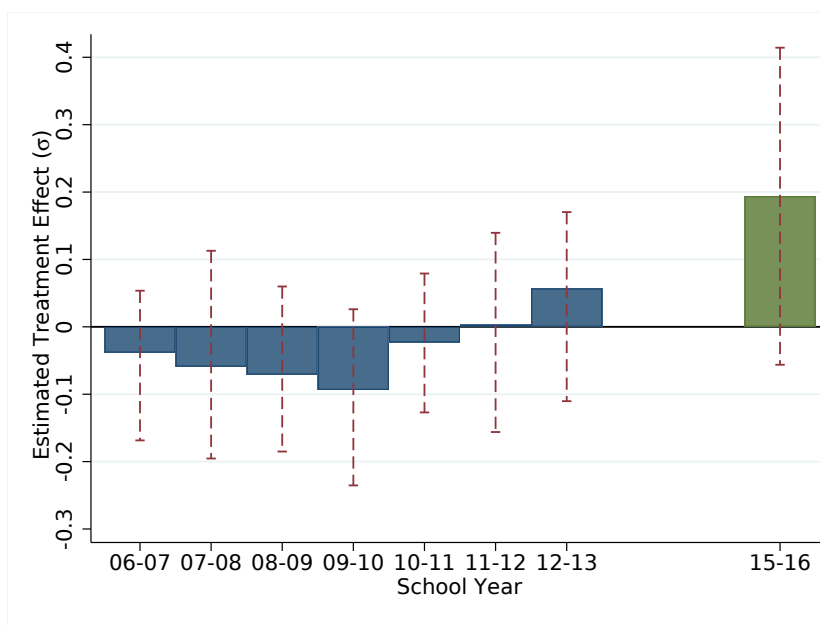
Notes: Figures show test score growth for individual students from 2014-15 to 2015-16 (e.g., current minus prior year test score) by distance to the Aliso Canyon gas leak. Figures 2(a) and 2(b) are based on 4,861 and 4,857 observations, respectively. The vertical line represents five miles (rounded to first decimal point) from the gas leak after which air filters were no longer installed in schools. Dashed lines represent 95% confidence intervals with standard errors clustered at the school level.

Figure 3: Robustness: Placebo Years

(a) Math Score



(b) English Score



Notes: This figure plots spatial RD estimates from equation (3.1) by year from 2006-07 through 2015-16. School years 2013-14 and 2014-15 are omitted due to no test scores being available in 2013-14. Controls for lagged test scores, demographics and residential ZIP Code fixed effects are used and thus the point estimate for the 2015-16 school year is identical to the one reported in column (3) of Table 3. The dashed whiskers represent 95 percent confidence intervals constructed using the wild cluster bootstrap procedure from Cameron et al. (2008) clustered at the school level.

Table 1: Summary Statistics for 2015-16

| | Full Sample ¹ | RD Sample ² (3.25-6.75 miles) | Test Score RD Sample ³ (3.25-6.75 miles) |
|---|--------------------------|---|--|
| | (1) | (2) | (3) |
| <i>Mean of Student Characteristics</i> | | | |
| Math Score (σ) | 0.00 | 0.35 | 0.36 |
| English Score (σ) | 0.00 | 0.36 | 0.36 |
| Lagged Math Score (σ) | 0.02 | 0.34 | 0.36 |
| Lagged Reading Score (σ) | 0.01 | 0.35 | 0.37 |
| Days Absent | 6.38 | 5.88 | 5.80 |
| % Hispanic | 73.6 | 60.3 | 60.5 |
| % White | 10.9 | 21.0 | 20.7 |
| % Black | 8.8 | 4.4 | 4.2 |
| % Asian | 4.4 | 9.5 | 9.6 |
| % Free/Reduced Price Lunch ⁴ | 88.5 | 75.5 | 75.5 |
| % English Learners | 28.4 | 16.9 | 16.6 |
| Parental Education: ⁵ | | | |
| % High School Dropout | 29.2 | 13.7 | 13.7 |
| % High School Graduate | 30.2 | 25.2 | 24.9 |
| % Some College | 18.1 | 23.2 | 23.4 |
| % College Graduate | 22.5 | 37.9 | 38.0 |
| # of Students | 90,042 | 5,172 | 4,861 |

¹ Data cover grades 4-5 in the Los Angeles Unified School District during the 2015-16 school year.

² ‘RD Sample’ is restricted to students attending LAUSD schools within 3.25 and 6.75 miles of the Aliso Canyon gas leak.

³ ‘Test Score RD Sample’ is the same as column (2), but further restricted to students with valid current and lagged math scores.

⁴ Data are missing in the full sample for eleven percent of observations, increasing to sixteen percent in the RD sample.

⁵ Data are missing in the full sample for twenty-five percent of observations where parental education was recorded as “Decline to Answer,” dropping to thirteen percent in the RD sample. ‘College graduate’ also incorporates those with post-graduate education.

Table 2: Air Testing Results Before and After Air Filter Delivery

| School Name | Times Tested | Methane (ppbv) (1) | Benzene (ppbv) (2) | Toluene (ppbv) (3) | Ethylbenzene (ppbv) (4) | Xylenes (ppbv) (5) | |
|-------------------------|----------------|-----------------------|-----------------------|-----------------------|----------------------------|-----------------------|------|
| Robert Frost Middle | Before: | 2 | 3,525 | 0.565 | 3.7 | 0.53 | 3.6 |
| | After: | 1 | 3,470 | 0.23 | 0.8 | None | 0.26 |
| Van Gogh Charter | Before: | 2 | 3,290 | 0.365 | 3 | 0.28 | 1.5 |
| | After: | 1 | 3,670 | None | 0.45 | None | 0.24 |
| Beckford Charter | Before: | 3 | 4,183 | 0.41 | 1.2 | 0.35 | 2.33 |
| | After: | 2 | 3,575 | 0.23 | 0.31 | None | 1.4 |
| El Oro Way Charter | Before: | 1 | 2,920 | 0.45 | 2.4 | 0.24 | 1.2 |
| | After: | 1 | 3,220 | 0.24 | 0.21 | None | None |
| Darby Avenue Charter | Before: | 3 | 4,795 | 0.65 | 8.21 | 1.63 | 5.35 |
| | After: | 2 | 3,210 | 0.23 | 0.37 | None | 1.7 |
| Germain Academy | Before: | 2 | 4,130 | 0.96 | 2.65 | 0.63 | 4.05 |
| | After: | 3 | 2,990 | 0.59 | 4.43 | None | 1.67 |
| Knollwood Preparatory | Before: | 1 | 3,230 | 0.54 | 4.2 | 0.49 | 3.1 |
| | After: | 1 | 2,900 | 0.20 | 0.33 | None | None |
| Superior St. Elementary | Before: | 2 | 4,215 | 0.71 | 7.4 | 0.95 | 5.2 |
| | After: | 2 | 3,245 | 0.22 | 1.01 | None | 0.47 |
| All Schools | Before: | 16 | 3,907 | 0.58 | 4.27 | 0.71 | 3.50 |
| | After: | 13 | 3,275 | 0.29 | 1.42 | None | 0.97 |

Regression Results: Pollutant Regressed on ‘After Filter’ Indicator with School Fixed Effects:

| | | | | | |
|--------------|---------|----------|--------|----------|----------|
| After Filter | -646.4* | -0.34*** | -3.09 | -0.71*** | -2.64*** |
| [p-value] | [0.08] | [0.00] | [0.13] | [0.00] | [0.00] |

Notes: This table shows pollutant readings from the air testing conducted by Waterstone Environmental as part of the air testing program conducted by the LAUSD in response to the Aliso Canyon gas leak before and after the plug-in air filters were delivered. Only schools with tests conducted *both* before and after the air filters were delivered are included. I omit all tests conducted from Jan 28 - Feb 5 to allow one week for the delivery and installation of plug-in air filters after the Jan 28th announcement date. ‘After’ thus captures tests conducted Feb 9 - Feb 22, while ‘before’ includes tests conducted Jan 19- Jan 27 and also incorporates one Dec 2 test conducted at Beckford Charter. ‘Regression Results’ report the result of the following regression: $pollutant_{st} = \alpha_s + \beta_1 \mathbb{1}\{AfterFilter\}_t + \epsilon_{st}$, where $pollutant_{st}$ is the pollutant level, $\mathbb{1}\{AfterFilter\}_t$ is a post air filter delivery indicator which equals one if date is after Feb 5 (and zero before Jan 28), and α_s are school fixed effects. The coefficient on ‘After Filter’ (β_1) is reported and represents the change in concentration of the pollutant after the plug-in air filters were delivered. Pollutant units are in parts per billion by volume (ppbv). Given there are only eight clusters, p-values clustered at the school level using the wild clustered bootstrap procedure from Cameron et al. (2008) are reported below the estimates in square brackets. Using inference from the wild clustered bootstrap procedure, ***,** and * denote significance at the 1%, 5% and 10% levels, respectively. Air testing results are available at <https://achieve.lausd.net//site/Default.aspx?PageID=10329>.

Table 3: Regression Discontinuity Estimates

| | <i>Elementary Schools Only</i> | | | | Middle Schools Included |
|---|--------------------------------|---------|---------|---------|----------------------------|
| | (1) | (2) | (3) | (4) | (5) |
| <i>Panel A. Outcome: Math Scores</i> | | | | | |
| Within 5 Miles | 0.203** | 0.183** | 0.195** | 0.183** | 0.189** |
| (clustered s.e.) | (0.090) | (0.077) | (0.064) | (0.062) | (0.061) |
| [wild cluster bootstrap p-value] | [0.038] | [0.047] | [0.025] | [0.047] | [0.029] |
| <i>Panel B. Outcome: English Scores</i> | | | | | |
| Within 5 Miles | 0.197 | 0.175 | 0.194* | 0.197 | 0.225* |
| (clustered s.e.) | (0.905) | (0.099) | (0.082) | (0.081) | (0.074) |
| [wild cluster bootstrap p-value] | [0.116] | [0.151] | [0.096] | [0.107] | [0.060] |
| <i>Controls</i> | | | | | |
| Lagged Test Scores | Yes | Yes | Yes | Yes | Yes |
| Demographic Controls | No | Yes | Yes | Yes | Yes |
| Residential ZIP Code FEs | No | No | Yes | Yes | Yes |
| Lagged Test Scores | Yes | Yes | Yes | Yes | Yes |
| Latitude-Longitude Controls | No | No | No | Yes | No |
| Observations | 4,861 | 4,861 | 4,861 | 4,861 | 13,567 |

Notes: Estimates report the effect of air filters on student achievement as described in equation (3.1). Column (5) reports results including the seven middle schools within 3.25-6.75 miles of the gas leak. Each cell is a separate RD estimate from a local linear regression allowing for different functions on either side of the threshold, except column (4) where a second-order polynomial control for latitude-longitude space is used instead. The bandwidth used is 1.75 miles. Effect sizes are in terms of standard deviations of the student test score distribution. ‘Lagged test scores’ control for a cubic of lagged math and English scores interacted with grade dummies. ‘Demographic controls’ include gender, ethnicity, free and reduced price lunch status, English learner status, age and age squared interacted with grade, and language spoken at home. Missing indicators are used to control for missing demographics and lagged other-subject scores. ‘Residential ZIP Code FEs’ are fixed effects for the ZIP Code of student residence. All regressions include grade and boundary segment fixed effects and control for a school’s magnet and affiliated charter status. Number of observations are reported for panel A; panel B has four fewer observations in columns (1)-(4) (36 less in column (5)) as these students lack lagged English scores. Standard errors clustered at the school level are reported in brackets. Given there are only twenty-eight clusters, p-values clustered at the school level using the wild clustered bootstrap procedure from Cameron et al. (2008) are reported below the standard errors in square brackets. Conducting inference using the wild clustered bootstrap procedure, ***,** and * denote significance at the 1%, 5% and 10% levels, respectively.

Table 4: Regression Discontinuity Estimates for 2016-17 Outcomes

| | <i>Elementary Schools Only</i> | | | <i>Middle Schools Included</i> | |
|---|--------------------------------|---------|-----------------------|--------------------------------|------------|
| | All | All | Transition Grade | All | Transition |
| | Grades | Grades | Excluded ¹ | Grades | Grades |
| | (1) | (2) | (3) | (4) | (5) |
| <i>Panel A. Outcome: 2016-17 Math Scores</i> | | | | | |
| Within 5 Miles | 0.080 | 0.091 | 0.265* | 0.068 | 0.210* |
| (clustered s.e.) | (0.097) | (0.074) | (0.112) | (0.077) | (0.105) |
| [wild cluster bootstrap p-value] | [0.530] | [0.341] | [0.087] | [0.456] | [0.098] |
| <i>Panel B. Outcome: 2016-17 English Scores</i> | | | | | |
| Within 5 Miles | -0.026 | 0.001 | 0.052 | 0.015 | 0.082 |
| (clustered s.e.) | (0.115) | (0.078) | (0.107) | (0.077) | (0.100) |
| [wild cluster bootstrap p-value] | [0.875] | [0.991] | [0.695] | [0.889] | [0.512] |
| <i>Controls</i> | | | | | |
| 2014-15 Test Scores | Yes | Yes | Yes | Yes | Yes |
| Demographic Controls | No | Yes | Yes | Yes | Yes |
| Residential ZIP Code FEs | No | Yes | Yes | Yes | Yes |
| Observations | 4,300 | 4,300 | 2,354 | 10,217 | 8,271 |

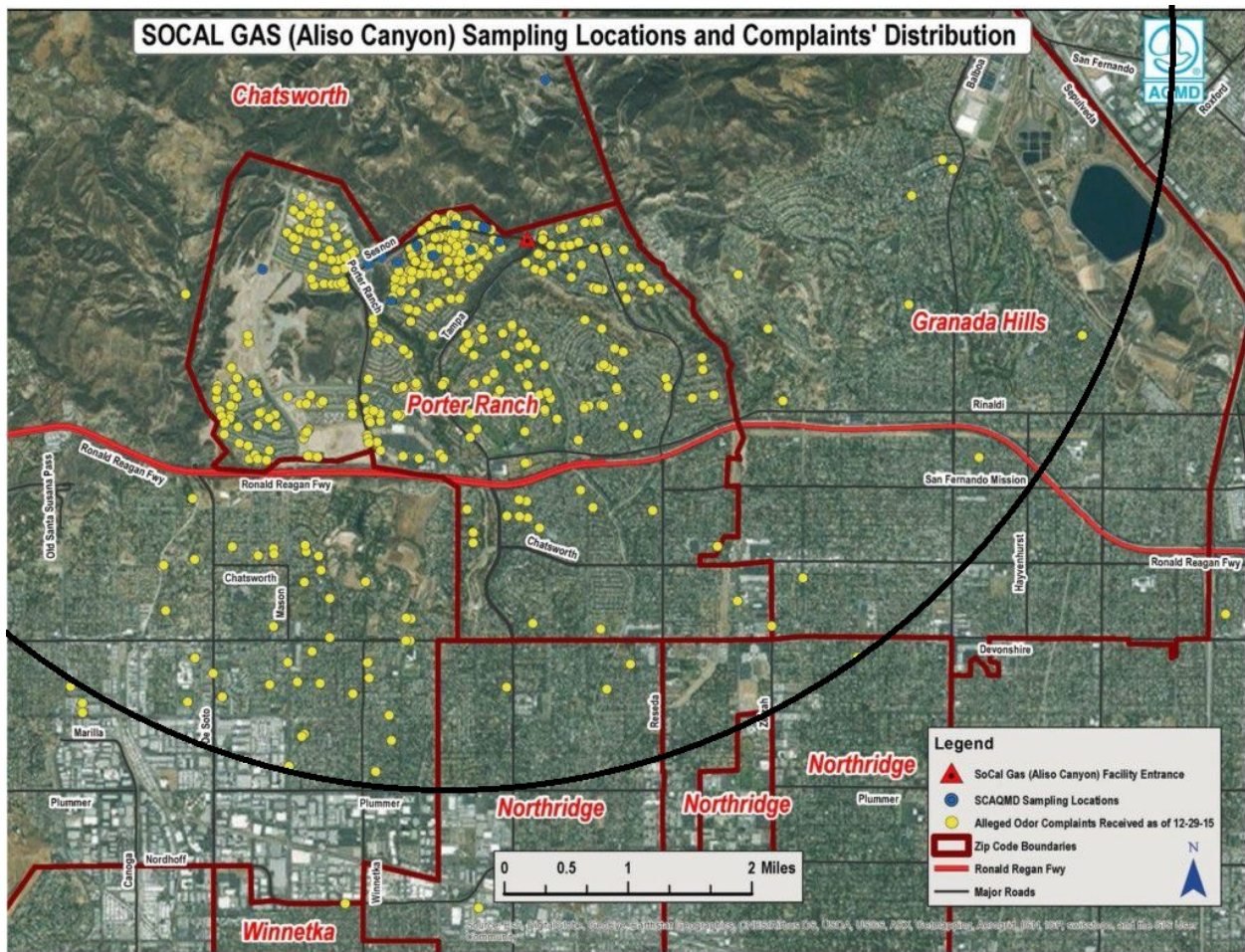
¹ ‘Transition’ grade refers to fifth grade students in 2015-16 who have transitioned to a new school in 2016-17 because of the grade span of elementary schools (all elementary schools have a K-5 grade span).

Notes: Estimates report the effect of air filters installed in January 2016 on student achievement at the end of the 2016-17 school year. The regression equation is the same as equation (3.1), but with the dependent variable $y_{isb,2015-16}$ being replaced by $y_{isb,2016-17}$. Columns (4) and (5) report results including the seven middle schools within 3.25-6.75 miles of the gas leak. Columns (3) and (5) exclude students that were in fifth grade during the 2015-16 school year as they transitioned to a new (potentially non air filtered) school. Each cell is a separate RD estimate from a local linear regression allowing for different functions on either side of the threshold. The bandwidth used is 1.75 miles. Effect sizes are in terms of standard deviations of the student test score distribution. ‘2014-15 test scores’ control for a cubic of 2014-15 (i.e., twice-lagged) math and English scores interacted with grade dummies. ‘Demographic controls’ include gender, ethnicity, free and reduced price lunch status, English learner status, age and age squared interacted with grade, and language spoken at home. Missing indicators are used to control for missing demographics and lagged other-subject scores. ‘Residential ZIP Code FEs’ are fixed effects for the ZIP Code of student residence. All regressions include grade and boundary segment fixed effects and control for a school’s magnet and affiliated charter status. Standard errors clustered at the school the student attended in 2015-16 are reported in brackets. Given there are only twenty-eight clusters, p-values clustered at the school attended in 2015-16 using the wild clustered bootstrap procedure from Cameron et al. (2008) are reported below the standard errors in square brackets. Conducting inference using the wild clustered bootstrap procedure, ***,** and * denote significance at the 1%, 5% and 10% levels, respectively.

For Online Publication

A Appendix Figures and Tables

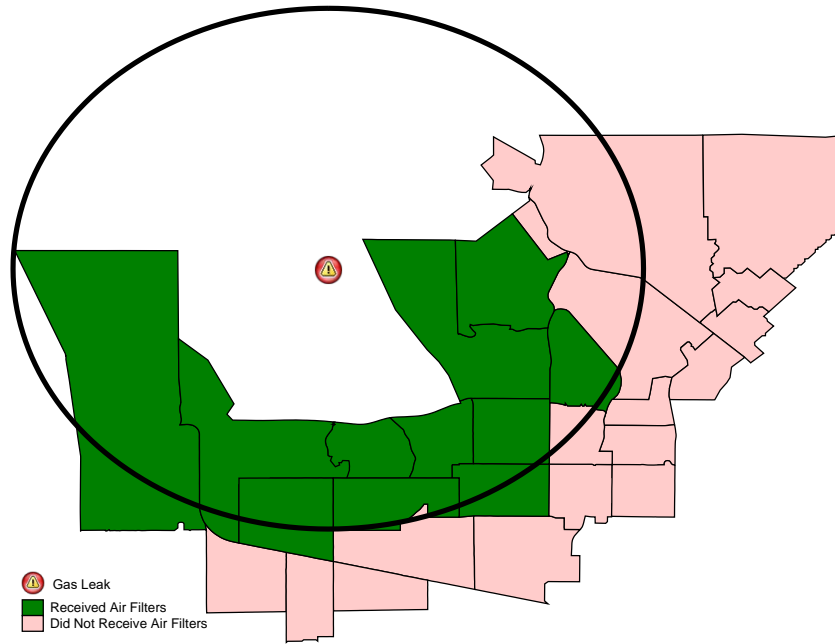
Figure A.1: Map of Resident Odor Complaints



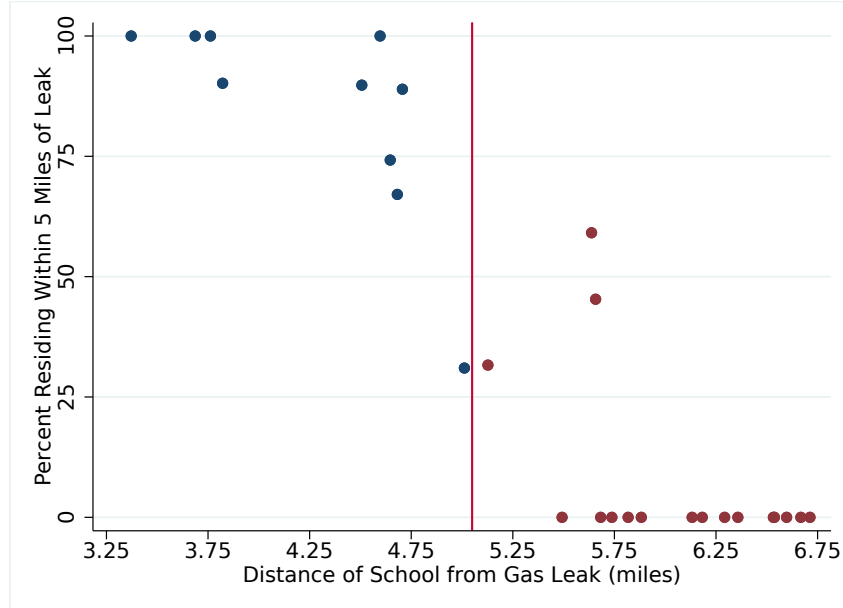
Notes: This figure shows alleged odor complaints reported to SoCalGas as of December 29, 2015. A black circle representing five miles from the gas leak is superimposed over the figure. Zip Code boundaries are also shown. The figure comes from an interoffice correspondence from the Los Angeles Unified School District Office of Environmental Health and Safety and is available at <https://achieve.lausd.net/cms/lib/CA01000043/Centricity/Domain/135/Informative%20re%20Aliso%20Canyon%20Gas%20LeakUpdate%20%2001%2021%2016.pdf>.

Figure A.2: Relocation Assistance Rates by School

(a) Map of School Attendance Zones



(b) Percent in Attendance Zone Residing Within 5 Miles of Leak



Notes: Figure A.2(a) displays the map of school attendance zone in 2015-16 for the twenty-eight schools in the RD sample and denotes whether a given schools received air filters or not. A circle is superimposed that denotes the five-mile radius around the gas leak in which residents would be eligible for relocation assistance from SoCalGas. One school that did not receive filters is excluded as it is an open enrollment magnet school as so has no attendance zone. Figure A.2(b) then shows the percent of the population within a school attendance zone that resides within five miles of the gas leak by each *school's* distance to the gas leak. Population counts come from the 2010 census and are calculated at the census block level and then are assigned to being within the five-mile boundary and a given attendance zone according to their centroid.

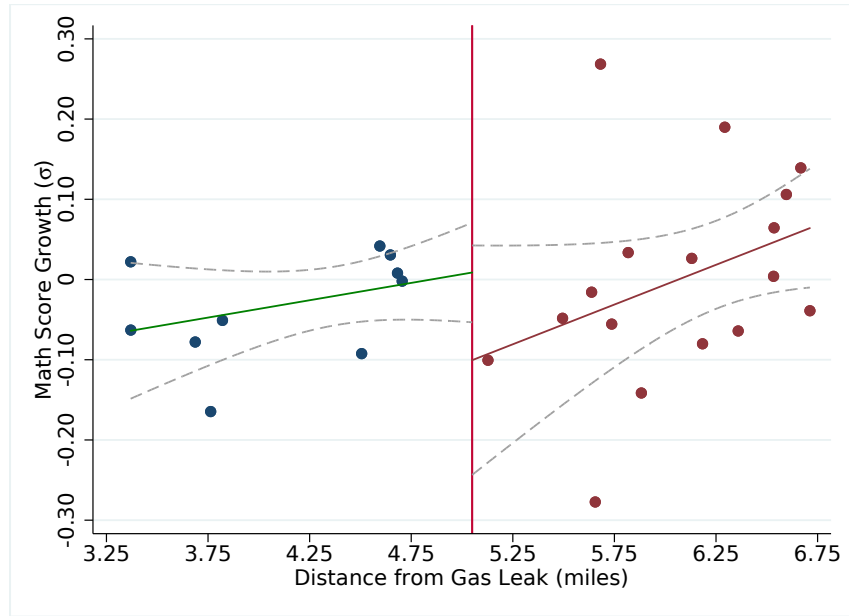
Figure A.3: Map of Methane Measurements



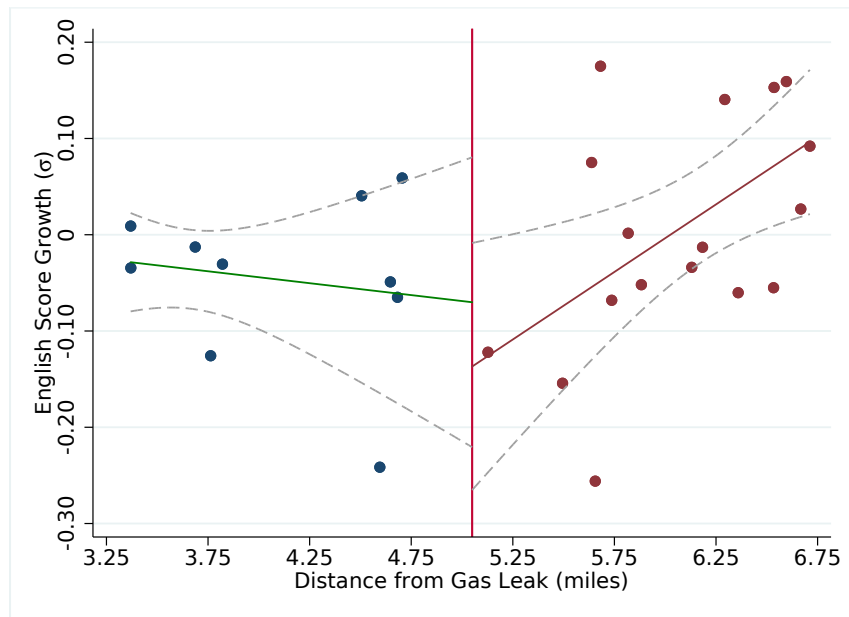
Notes: This figure is directed southwestward and shows estimated natural gas presence from a laser-based methane detector used by researchers Rob Jackson, Nathan Phillips, and Bob Ackley to document the extent of the Aliso Canyon gas leak (Phillips et al., 2016). The vertical height of the bars indicate the amount of natural gas detected. Visually, the natural gas presence appears concentrated north of the Ronald Reagan Freeway which is about two miles south of the Aliso Canyon gas leak.

Figure A.4: Test Score Growth by Distance to Leak ('Outlier' Omitted)

(a) Math Score Growth



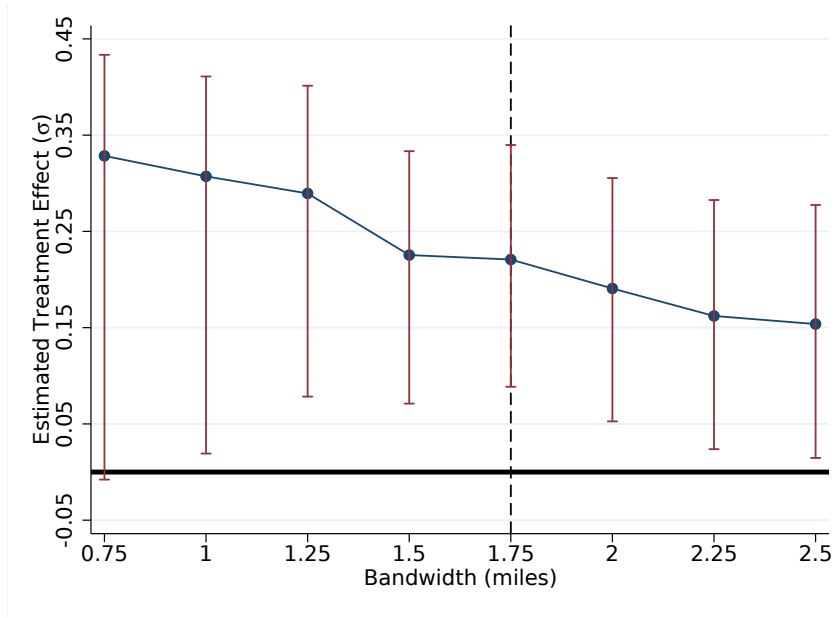
(b) English Score Growth



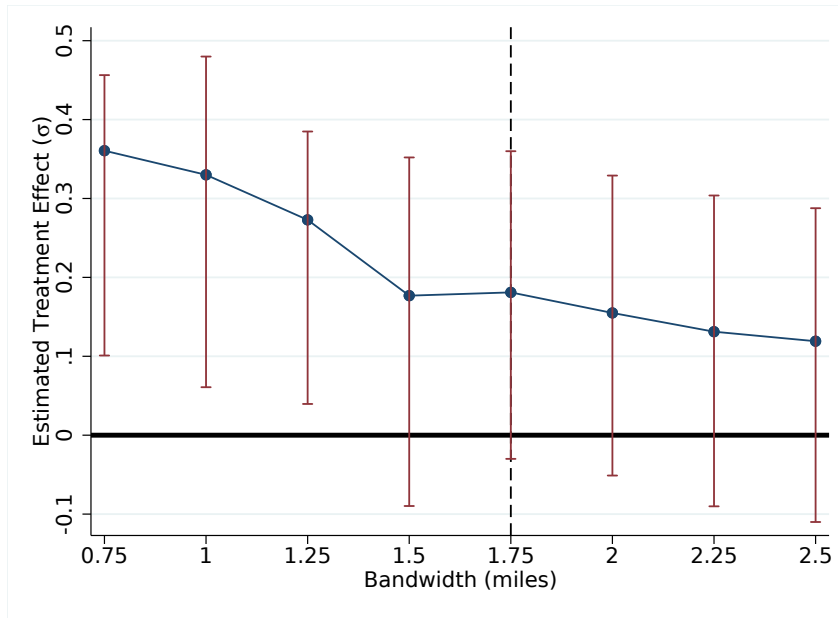
Notes: Figures recreate those in Figure 2, but omit Andasol Avenue Elementary which was the school nearest the five-mile boundary that still received air filters and experienced a large test score growth in both math and English. Figures show test score growth for individual students from 2014-15 to 2015-16 (e.g., current minus prior year test score) by distance to the Aliso Canyon gas leak. Figures A.4(a) and A.4(b) are based on 4,729 and 4,728 observations, respectively. The vertical line represents five miles (rounded to first decimal point) from the gas leak after which air filters were no longer installed in schools. Dashed lines represent 95% confidence intervals with standard errors clustered at the school level. Table A.3 reports regression results with Andasol Avenue Elementary omitted.

Figure A.5: Robustness: Bandwidth

(a) Math Score



(b) English Score



Notes: These figures plot spatial RD estimates using various bandwidths from 0.75 to 2.5 miles. Controls for lagged test scores, demographics, and residential ZIP Code fixed effects are used. The vertical dashed line represents a bandwidth of 1.75 miles which is used for the main analysis (with its point estimate being the same as that reported in column (3) of Table 3). The whiskers represent 95 percent confidence intervals with inference done clustering at the school level using the wild cluster bootstrap procedure from Cameron et al. (2008). Note that the wild clustered bootstrap procedure generates asymmetric confidence intervals.

Table A.1: Air Testing Results from Schools within 5 Miles (Max Reading)

| School Name | Distance to Leak (miles) (1) | Times Tested (2) | Methane (ppbv) (3) | Ethane (ppbv) (4) | Benzene (ppbv) (5) | Toluene (ppbv) (6) | Ethylbenzene (ppbv) (7) | Xylenes (ppbv) (8) |
|--------------------------------------|---------------------------------|---------------------|-----------------------|----------------------|-----------------------|-----------------------|----------------------------|-----------------------|
| Castlebay Lane Charter ¹ | 1.7 | 15 | 6,400 | 120 | 0.92 | 14.4 | 11.37 | 39.9 |
| Porter Ranch Community ¹ | 1.8 | 15 | 12,940 | 460 | 0.73 | 1.8 | 0.24 | 1.7 |
| Robert Frost Middle | 3.2 | 3 | 3,970 | None | 0.60 | 4.7 | 0.54 | 3.6 |
| Van Gogh Charter | 3.3 | 3 | 3,670 | None | 0.38 | 3.1 | 0.29 | 1.6 |
| Beckford Charter | 3.4 | 5 | 5,050 | None | 0.73 | 1.8 | 0.55 | 3.7 |
| El Oro Way Charter | 3.7 | 3 | 3,220 | None | 0.45 | 2.6 | 0.24 | 1.2 |
| Darby Avenue Charter | 3.8 | 5 | 5,950 | None | 1.10 | 17.0 | 2.80 | 8.2 |
| Germain Academy | 3.9 | 6 | 4,300 | None | 1.20 | 9.9 | 0.78 | 5.0 |
| Granada Hills Charter High | 4.2 | 2 | 3,440 | None | 0.50 | 4.3 | None | 3.1 |
| Nobel Charter Middle | 4.4 | 2 | 3,240 | None | 0.47 | 12.0 | None | 3.1 |
| Chatsworth Charter High ² | 4.5 | 2 | 5,040 | None | 0.56 | 7.6 | None | 2.1 |
| Knollwood Preparatory | 4.5 | 4 | 3,420 | None | 1.60 | 12.0 | 0.50 | 3.5 |
| Ernest Lawrence Middle | 4.6 | 2 | 3,980 | None | 0.57 | 9.8 | 0.67 | 5.4 |
| Granada Community Charter | 4.6 | 2 | 3,320 | None | 0.38 | 9.8 | 0.44 | 2.9 |
| Chatsworth Park Elementary | 4.6 | 2 | 3,090 | None | 0.34 | 8.4 | 6.20 | 4.4 |
| Superior Street Elementary | 4.7 | 4 | 4,280 | None | 0.84 | 7.5 | 1.10 | 6.3 |
| Topeka Drive Charter | 4.7 | 2 | 3,120 | None | 0.64 | 7.1 | None | 1.6 |
| Patrick Henry Middle | 4.8 | 2 | 3,420 | None | 0.54 | 13.0 | 0.29 | 1.4 |
| Andasol Avenue Elementary | 5.0 | 2 | 3,050 | None | 0.37 | 7.4 | None | 4.7 |
| Regulatory Limit ³ | - | - | 500,000 | 1,000,000 | 0.92 | 80 | 450 | 160 |

¹ Castlebay Lane Charter and Porter Ranch Community were tested every school day from Nov 30-Dec 18 (except Dec 15 as all LAUSD were closed due to a terrorist threat) as well as February 22.

² Due to their proximity, Chatsworth Charter High and Stoney Point Continuation were tested as one school.

³ Regulatory limits for methane and ethane are from the National Institute for Occupational Safety and Health, while the regulatory limits for benzene, toluene, ethylbenzene and xylenes are from the California Office of Environmental Health Hazard Assessment Chronic Reference Exposure Level.

Notes: This table shows the *maximum* reading of six pollutants that were tested Waterstone Environmental as part of the air testing program conducted by the LAUSD in response to the Aliso Canyon gas leak. Pollutant units are in parts per billion by volume (ppbv). The two schools nearest to the leak, Castlebay Lane Charter and Porter Ranch Community, were tested every schoolday from Nov 30-Dec 18 and then were relocated to new schools outside the five-mile boundary after Dec 18. Every other school within five miles of the gas leak was tested at least twice starting on Jan 19 as part of the program, although several schools were tested more often and Beckford Charter was also tested on Dec 2. Schools appeared to have been tested more than twice for two reasons: (i) schools initially tested on or before Jan 28 were retested in mid-February, and (ii) any school with a benzene reading above 0.92 ppbv were retested soon after. Air testing results are available at <https://achieve.lausd.net//site/Default.aspx?PageID=10329>.

Table A.2: Tests of Discontinuities in Observable Covariates

| | Percent Hispanic (1) | Percent White (2) | Percent Asian (3) | Percent Black (4) | Percent FRPM ¹ (5) | Percent EL ² (6) |
|-----------------------------------|------------------------------------|--------------------------------|-------------------------------|------------------------------|-------------------------------------|-----------------------------------|
| Within 5 Miles | 1.51 | 1.07 | 1.01 | -2.01 | 2.34 | -0.30 |
| [p-value] | [0.94] | [0.91] | [0.92] | [0.33] | [0.84] | [0.97] |
| Observations | 4,859 | 4,859 | 4,859 | 4,859 | 4,080 | 4,861 |
| Mean Dep. Var. | 60.5 | 20.7 | 9.6 | 4.2 | 75.5 | 16.6 |
| <i>Student has Parent who is:</i> | | | | | | |
| | Some College or Graduate (7) | High School Graduate (8) | High School Dropout (9) | Lagged Math Score (10) | Lagged English Score (11) | Took Math Test (12) |
| Within 5 Miles | 3.70 | -1.01 | -2.68 | -0.07 | -0.03 | 0.57 |
| [p-value] | [0.79] | [0.91] | [0.72] | [0.86] | [0.92] | [0.82] |
| Observations | 4,208 | 4,208 | 4,208 | 4,861 | 4,861 | 5,172 |
| Mean Dep. Var. | 61.4 | 24.9 | 13.7 | 0.36 | 0.37 | 0.94 |

¹ FRPM is an acronym for ‘free or reduced price meal eligible.’

² EL is an acronym for ‘English learners.’

Notes: Estimates report the discontinuity in observable covariates by running equation (3.1) with a covariate as the dependent variable (rather than test scores). Sample is restricted to elementary school students with valid current and lagged math scores, except for column (12) which is only restricted to valid lagged math scores. Each cell represents results from a separate local linear regression allowing for different functions on either side of the threshold. The bandwidth used is 1.75 miles and grade and boundary fixed effects are included. This table reports p-values (rather than standard errors) using the wild clustered bootstrap procedure from Cameron et al. (2008) clustered at the school level given that there are only twenty-eight clusters. ***,** and * denote significance at the 1%, 5% and 10% levels, respectively.

Table A.3: Outlier Robustness

| | <i>Elementary Schools Only</i> | | | | Middle Schools Included |
|---|--------------------------------|---------|---------|---------|----------------------------|
| | (1) | (2) | (3) | (4) | (5) |
| <i>Panel A. Outcome: Math Scores</i> | | | | | |
| Within 5 Miles | 0.116* | 0.103** | 0.135** | 0.123** | 0.155** |
| (clustered s.e.) | (0.062) | (0.049) | (0.049) | (0.050) | (0.059) |
| [wild cluster bootstrap p-value] | [0.087] | [0.050] | [0.037] | [0.047] | [0.044] |
| <i>Panel B. Outcome: English Scores</i> | | | | | |
| Within 5 Miles | 0.109 | 0.082 | 0.124 | 0.121 | 0.194 |
| (clustered s.e.) | (0.094) | (0.076) | (0.087) | (0.088) | (0.084) |
| [wild cluster bootstrap p-value] | [0.316] | [0.338] | [0.273] | [0.308] | [0.182] |
| <i>Controls</i> | | | | | |
| Lagged Test Scores | Yes | Yes | Yes | Yes | Yes |
| Demographic Controls | No | Yes | Yes | Yes | Yes |
| Residential ZIP Code FEs | No | No | Yes | Yes | Yes |
| Latitude-Longitude Controls | No | No | No | Yes | No |
| Observations | 4,729 | 4,729 | 4,729 | 4,729 | 13,435 |

Notes: To ensure that results are not driven by an outlier, this table recreates results from Table 3 but omits the outlier observation, Andasol Avenue Elementary, located 5.02 miles from the leak (and thus received air filters given the first digit rounding convention) which had a tremendous 0.35σ and 0.20σ growth in math and English scores, respectively. This drops 132 observations relative to the results in Table 3. As in Table 3, estimates report the effect of air filters on student achievement as described in equation (3.1). Column (5) reports results including the seven middle schools within 3.25-6.75 miles of the gas leak. Each cell is a separate RD estimate from a local linear regression allowing for different functions on either side of the threshold, except column (4) where a second-order polynomial control for latitude-longitude space is used instead. The bandwidth used is 1.75 miles. Effect sizes are in terms of standard deviations of the student test score distribution. ‘Lagged test scores’ control for a cubic of lagged math and English scores interacted with grade dummies. ‘Demographic controls’ include gender, ethnicity, free and reduced price lunch status, English learner status, age and age squared interacted with grade, and language spoken at home. Missing indicators are used to control for missing demographics and lagged other-subject scores. ‘Residential ZIP Code FEs’ are fixed effects for the ZIP Code of student residence. All regressions include grade and boundary segment fixed effects and control for a school’s magnet and affiliated charter status. Number of observations are reported for panel B; panel A has one fewer observation (33 in column (5)) as these students lack lagged English scores. Standard errors clustered at the school level are reported in brackets. Given there are only twenty-seven clusters, p-values clustered at the school level using the wild clustered bootstrap procedure from Cameron et al. (2008) are reported below the standard errors in square brackets. Conducting inference using the wild clustered bootstrap procedure, ***,** and * denote significance at the 1%, 5% and 10% levels, respectively.

Table A.4: Functional Form Robustness

| | <i>Control for Geographic Location:</i> | | | | |
|---|---|---|---------------|------------------|-----------------------------|
| | None (1) | Percent Residing Within 5 Miles (2) | Linear (3) | Quadratic (4) | Triangular Kernel (5) |
| <i>Panel A. Outcome: Math Scores</i> | | | | | |
| Within 5 Miles | 0.092* | 0.240** | 0.195** | 0.245* | 0.220** |
| (clustered s.e.) | (0.037) | (0.92) | (0.064) | (0.061) | (0.054) |
| [wild cluster bootstrap p-value] | [0.076] | [0.049] | [0.025] | [0.068] | [0.020] |
| <i>Panel B. Outcome: English Scores</i> | | | | | |
| Within 5 Miles | 0.123** | 0.241* | 0.194* | 0.186 | 0.181 |
| (clustered s.e.) | (0.036) | (0.093) | (0.082) | (0.085) | (0.076) |
| [wild cluster bootstrap p-value] | [0.023] | [0.092] | [0.096] | [0.338] | [0.156] |
| <i>Controls</i> | | | | | |
| Lagged Test Scores | Yes | Yes | Yes | Yes | Yes |
| Demographic Controls | Yes | Yes | Yes | Yes | Yes |
| Residential ZIP Code FEs | Yes | Yes | Yes | Yes | Yes |
| Observations | 4,861 | 4,861 | 4,861 | 4,861 | 4,861 |

Notes: This table shows robustness to the functional form that controls for geographic location by estimating the effect of air filters on student achievement as described in equation (3.1) using various functional forms (including none). Column (1) features no geographic controls, while column (2) simply controls for the percent of people in a school's attendance zone that reside within five miles of the leak. Column (3) is identical to column (3) in Table 3 as both control for geographic location using linear distance to the gas leak. Boundary segment fixed effects are included in columns (3)-(5). 'Lagged test scores' control for a cubic of lagged math and English scores interacted with grade dummies. 'Demographic controls' include gender, ethnicity, free and reduced price lunch status, English learner status, age and age squared interacted with grade, and language spoken at home. Missing indicators are used to control for missing demographics and lagged other-subject scores. 'Residential ZIP Code FEs' are fixed effects for the ZIP Code of student residence. All regressions include grade fixed effects and control for a school's magnet and affiliated charter status. Number of observations are reported for panel A; panel B has four fewer observations as these students lack lagged English scores. Standard errors clustered at the school level are reported in brackets. Given there are only twenty-eight clusters, p-values clustered at the school level using the wild clustered bootstrap procedure from Cameron et al. (2008) are reported below the standard errors in square brackets. Conducting inference using the wild clustered bootstrap procedure, ***, ** and * denote significance at the 1%, 5% and 10% levels, respectively.